

Advanced Audio Distribution Profile

Bluetooth® Profile Specification

- **Version:** v1.4.1
- **Version Date:** 2025-06-30
- **Prepared By:** Audio, Telephony, and Automotive Working Group

Abstract

This profile defines the requirements for Bluetooth devices necessary for support of the high-quality audio distribution. The requirements are expressed in terms of end-user services, and by defining the features and procedures that are required for interoperability between Bluetooth devices in the Audio Distribution usage model.



Version History

Version	Date	Comments
v1.3.1	14 July 2015	Adopted by the Bluetooth SIG BoD
v1.3.2	2019-01-21	Adopted by the Bluetooth SIG Board of Directors
v1.4	2022-06-21	Adopted by the Bluetooth SIG Board of Directors.
v1.4.1	2025-06-30	Adopted by the Bluetooth SIG Board of Directors.

Acknowledgments

Name	Company
Rüdiger Mosig	Berner and Mattner
Alicia Courtney	Broadcom
Ash Kapur	Broadcom
Jiny Bradshaw	CSR
Allan Madsen	CSR
David Trainor	CSR
Akira Miyajima	Denso
Christof Fersch	Dolby
Daniel Fischer	Dolby
Morgan Lindqvist	Ericsson
Fisseha Mekuria	Ericsson
Wim Koster	Ericsson
Rene Kuiken	Ericsson
Daniel Richter	Fraunhofer IIS
Max Neuendorf	Fraunhofer IIS
Markus Schnell	Fraunhofer IIS
Yuan Quinton	Marvell
Tsuyoshi Okada	Matsushita Electric Industrial
Thomas Karlsson	Mecel
Kalervo Kontola	Nokia
Vesa Lunden	Nokia
Janne Hamalainen	Nokia
Jurgen Schnitzler	Nokia

Name	Company
Thierry Wœlfflé	Parrot
Shaun Barrett	Philips
Christian Bouffieux	Philips
Frans de Bont	Philips
Rob J. Davies	Philips
Emmanuel Mellery	Philips
Marc Vauclair	Philips
Scott Walsh	Plantronics
Brian Gix	Qualcomm
John Larkin	Qualcomm
Atsushi Ichise	Sony
Harumi Kawamura	Sony
Hiroyasu Noguchi	Sony
Kenzo Akagiri	Sony
Masahiko Seki	Sony
Masayuki Nishiguchi	Sony
Masakazu Hattori	Sony
Rüdiger Mosig	Sony
Tomoko Tanaka	Sony
Wilhelm Hagg	Sony
Yoshiyuki Nezu	Sony
Siân James	Symbian
Junko Ami	Toshiba
Takeshi Saito	Toshiba
Yoshiaki Takabatake	Toshiba
Yoichi Takebayashi	Toshiba
Ichiro Tomoda	Toshiba
Junichi Yoshizawa	Toshiba

Use of this specification is your acknowledgement that you agree to and will comply with the following notices and disclaimers. You are advised to seek appropriate legal, engineering, and other professional advice regarding the use, interpretation, and effect of this specification.

Use of Bluetooth specifications by members of Bluetooth SIG is governed by the membership and other related agreements between Bluetooth SIG and its members, including those agreements posted on Bluetooth SIG's website located at www.bluetooth.com. Any use of this specification by a member that is not in compliance with the applicable membership and other related agreements is prohibited and, among other things, may result in (i) termination of the applicable agreements and (ii) liability for infringement of the intellectual property rights of Bluetooth SIG and its members. This specification may provide options, because, for example, some products do not implement every portion of the specification. All content within the specification, including notes, appendices, figures, tables, message sequence charts, examples, sample data, and each option identified is intended to be within the bounds of the Scope as defined in the Bluetooth Patent/Copyright License Agreement ("PCLA"). Also, the identification of options for implementing a portion of the specification is intended to provide design flexibility without establishing, for purposes of the PCLA, that any of these options is a "technically reasonable non-infringing alternative."

Use of this specification by anyone who is not a member of Bluetooth SIG is prohibited and is an infringement of the intellectual property rights of Bluetooth SIG and its members. The furnishing of this specification does not grant any license to any intellectual property of Bluetooth SIG or its members. THIS SPECIFICATION IS PROVIDED "AS IS" AND BLUETOOTH SIG, ITS MEMBERS AND THEIR AFFILIATES MAKE NO REPRESENTATIONS OR WARRANTIES AND DISCLAIM ALL WARRANTIES, EXPRESS OR IMPLIED, INCLUDING ANY WARRANTIES OF MERCHANTABILITY, TITLE, NON-INFRINGEMENT, FITNESS FOR ANY PARTICULAR PURPOSE, OR THAT THE CONTENT OF THIS SPECIFICATION IS FREE OF ERRORS. For the avoidance of doubt, Bluetooth SIG has not made any search or investigation as to third parties that may claim rights in or to any specifications or any intellectual property that may be required to implement any specifications and it disclaims any obligation or duty to do so.

TO THE MAXIMUM EXTENT PERMITTED BY APPLICABLE LAW, BLUETOOTH SIG, ITS MEMBERS AND THEIR AFFILIATES DISCLAIM ALL LIABILITY ARISING OUT OF OR RELATING TO USE OF THIS SPECIFICATION AND ANY INFORMATION CONTAINED IN THIS SPECIFICATION, INCLUDING LOST REVENUE, PROFITS, DATA OR PROGRAMS, OR BUSINESS INTERRUPTION, OR FOR SPECIAL, INDIRECT, CONSEQUENTIAL, INCIDENTAL OR PUNITIVE DAMAGES, HOWEVER CAUSED AND REGARDLESS OF THE THEORY OF LIABILITY, AND EVEN IF BLUETOOTH SIG, ITS MEMBERS OR THEIR AFFILIATES HAVE BEEN ADVISED OF THE POSSIBILITY OF THE DAMAGES.

Products equipped with Bluetooth wireless technology ("Bluetooth Products") and their combination, operation, use, implementation, and distribution may be subject to regulatory controls under the laws and regulations of numerous countries that regulate products that use wireless non-licensed spectrum. Examples include airline regulations, telecommunications regulations, technology transfer controls, and health and safety regulations. You are solely responsible for complying with all applicable laws and regulations and for obtaining any and all required authorizations, permits, or licenses in connection with your use of this specification and development, manufacture, and distribution of Bluetooth Products. Nothing in this specification provides any information or assistance in connection with complying with applicable laws or regulations or obtaining required authorizations, permits, or licenses.

Bluetooth SIG is not required to adopt any specification or portion thereof. If this specification is not the final version adopted by Bluetooth SIG's Board of Directors, it may not be adopted. Any specification adopted by Bluetooth SIG's Board of Directors may be withdrawn, replaced, or modified at any time. Bluetooth SIG reserves the right to change or alter final specifications in accordance with its membership and operating agreements.

Copyright © 2001–2025. All copyrights in the Bluetooth Specifications themselves are owned by Apple Inc., Ericsson AB, Intel Corporation, Google LLC, Lenovo (Singapore) Pte. Ltd., Microsoft Corporation, Nokia Corporation, and Toshiba Corporation. The Bluetooth word mark and logos are owned by Bluetooth SIG, Inc. Other third-party brands and names are the property of their respective owners.



Contents

1	Introduction	9
1.1	Scope	9
1.2	Profile dependency	9
1.3	Symbols and conventions	10
1.3.1	Requirement status symbols	10
1.4	Bluetooth A2DP Profile change history	10
1.4.1	Changes from 1.3 to 1.4	10
1.4.1.1	New features	10
1.4.2	Changes from v1.4 to v1.4.1	10
1.5	Language	11
1.5.1	Language conventions	11
1.5.2	Reserved for Future Use	11
1.5.3	Prohibited	12
2	Profile overview	13
2.1	Profile stacks	13
2.2	Configurations and roles	13
2.3	User requirements and scenarios	14
2.4	Profile fundamentals	14
2.5	Conformance	15
3	Application layer	16
3.1	Audio Streaming setup	16
3.2	Audio Streaming	16
3.2.1	Send Audio Stream	17
3.2.2	Receive Audio Stream	17
4	Audio codec interoperability requirements	19
4.1	Overview	19
4.2	Support of codec interoperability requirements	19
4.2.1	Mandatory codec interoperability requirements	19
4.2.2	Optional codec interoperability requirements	20
4.2.3	Vendor Specific A2DP codec interoperability requirements	20
4.2.4	Unsupported codec interoperability requirements	20
4.2.5	Audio Codec Type values	20
4.3	SBC codec interoperability requirements	20
4.3.1	Reference	20
4.3.2	Codec Specific Information Elements	20
4.3.2.1	Sampling Frequency	21
4.3.2.2	Channel Mode	21
4.3.2.3	Block Length	22
4.3.2.4	Subbands	22
4.3.2.5	Allocation Method	22
4.3.2.6	Minimum / Maximum Bitpool Value	22
4.3.3	Media packet header requirements	23
4.3.3.1	Timestamp (TS)	23
4.3.3.2	Payload type (PT)	23
4.3.3.3	Marker (M) bit	23
4.3.3.4	Extension (X) bit	24



4.3.4	Media payload format	24
4.4	MPEG-1,2 Audio codec interoperability requirements	25
4.4.1	Reference	25
4.4.2	Codec Specific Information Elements	25
4.4.2.1	Layer	25
4.4.2.2	CRC Protection	25
4.4.2.3	Channel Mode	26
4.4.2.4	Media payload format (MPF)	26
4.4.2.5	Sampling Frequency	26
4.4.2.6	VBR	27
4.4.2.7	Bit Rate Index	27
4.4.3	Media packet header requirements	28
4.4.4	Media payload format	28
4.5	MPEG-2, 4 AAC codec interoperability requirements	28
4.5.1	Reference	28
4.5.2	Codec Specific Information Elements	28
4.5.2.1	Object Type	29
4.5.2.2	MPEG-D DRC	29
4.5.2.3	Sampling Frequency	30
4.5.2.4	Channels	30
4.5.2.5	Bit rate	31
4.5.2.6	VBR	31
4.5.3	Media packet header requirements	31
4.5.4	Media payload format	31
4.6	ATRAC family codec interoperability requirements	31
4.6.1	Reference	31
4.6.2	Codec Specific Information Elements	32
4.6.2.1	Version	32
4.6.2.2	Channel Mode	32
4.6.2.3	Fs (Sampling Frequency)	33
4.6.2.4	VBR	33
4.6.2.5	Bit Rate Index	33
4.6.2.6	Maximum SUL	34
4.6.3	Media packet header requirements	35
4.6.3.1	Timestamp (TS)	35
4.6.3.2	Payload type (PT)	35
4.6.3.3	Marker (M) bit	35
4.6.3.4	Extension (X) bit	35
4.6.4	Media payload format	35
4.7	Vendor Specific A2DP codec interoperability requirements	35
4.7.1	Reference	35
4.7.2	Codec Specific Information Elements	35
4.7.2.1	Vendor ID	36
4.7.2.2	Vendor Specific Codec ID	36
4.7.2.3	Vendor Specific Value	36
4.7.3	Media packet header requirements	36
4.7.4	Media payload format	36
4.8	MPEG-D USAC codec interoperability requirements	36
4.8.1	Reference	36
4.8.2	Codec Specific Information Elements	36
4.8.2.1	Object Type	37
4.8.2.2	Sampling Frequency	37

4.8.2.3	Channels	38
4.8.2.4	VBR	38
4.8.2.5	Bit rate	39
4.8.3	Media packet header requirements	39
4.8.4	Media payload format	39
5	GAVDP interoperability requirements	40
5.1	AVDTP interoperability requirements	40
5.1.1	Signaling procedures	40
5.1.1.1	Streaming roles	40
5.1.1.2	Delay Reporting roles	40
5.1.2	Transport services	41
5.1.3	Error codes	41
5.2	L2CAP interoperability requirements	46
5.2.1	Maximum Transmission Unit	47
5.3	SDP interoperability requirements	47
5.4	Link Manager interoperability requirements	49
5.5	Link Controller interoperability requirements	49
5.5.1	Class of Device	49
6	Generic Access Profile interoperability requirements	50
6.1	Modes	50
6.2	Security aspects	50
6.3	Idle mode procedures	50
7	Acronyms and abbreviations	52
8	References	54
Appendix A	Audio Streaming with content protection	55
Appendix B	Technical Specification of SBC	56
B.1	Introduction	56
B.2	Glossary	56
B.3	Symbols and abbreviations	56
B.3.1	Arithmetic operators	56
B.3.2	Logical operators	57
B.3.3	Relation operators	57
B.3.4	Bitwise operators	57
B.3.5	Assignment	58
B.3.6	Mnemonics	58
B.3.7	Constants	58
B.3.8	Ranges	58
B.3.9	Number notation	59
B.4	Syntax	59
B.5	Semantics	61
B.5.1	Frame_header	61
B.5.2	scale_factors	62
B.5.3	audio_samples	62
B.5.4	padding	62
B.6	Decoding processes	62
B.6.1	Frame header	63
B.6.1.1	CRC check	63

B.6.2	Scale factors	63
B.6.3	Bit allocation	64
B.6.3.1	MONO and DUAL_CHANNEL bit allocation	64
B.6.3.2	STEREO and JOINT_STEREO bit allocation	66
B.6.4	Reconstruction of the subband samples	70
B.6.5	Joint processing	70
B.6.6	Synthesis filter	70
B.7	Encoding processes	72
B.7.1	Analysis filter	72
B.7.2	Scale factors	73
B.7.3	JOINT_STEREO channel mode operation	73
B.7.4	Bit allocation	74
B.7.5	Quantization	74
B.8	Tables	74
B.9	Calculation of bit rate and frame length	76
Appendix C	Signaling flows	77
C.1	Audio Streaming setup	77
C.2	Audio Streaming	78

1 Introduction

1.1 Scope

The Advanced Audio Distribution Profile (A2DP) defines the protocols and procedures that realize distribution of audio content of high quality in mono, stereo, or multi-channel modes. The term “advanced audio”, therefore, should be distinguished from “Bluetooth audio”, which indicates distribution of narrow band voice on SCO channels as defined in Volume 2, Part B, Section 9 in the Bluetooth Core Specification [1].

A typical usage case is the streaming of music content from a stereo music player to headphones or speakers. The audio data is compressed in a proper format for efficient use of the limited bandwidth.

A2DP focuses on audio streaming, while the Video Distribution Profile (VDP) specifies video streaming. Support of both profiles enables the distribution of video content accompanied with high-quality audio. The usage case of video and audio streaming is described in VDP.

Note also that the A2DP does not include remote control functions. Devices may support remote control features by implementing both A2DP and the control profile as depicted, for example, in the usage scenario of Audio/Video Remote Control Profile (AVRCP) [2].

1.2 Profile dependency

In Figure 1.1, the structure and the dependencies of the profiles are depicted. A profile is dependent upon another profile if it re-uses parts of that profile, by implicitly or explicitly referencing it. Dependency is illustrated in the figure. A profile has dependencies on the profile(s) in which it is contained – directly and indirectly.

As indicated in Figure 1.1, the A2DP is dependent upon the Generic Access Profile (GAP), as well as the Generic Audio/Video Distribution Profile (GAVDP) [3], which defines procedures required to set up an audio/video streaming. The A2DP defines parameters and procedures that are specific for audio streaming. The terminology, user interface and procedures as defined in the GAP and GAVDP are applicable to this profile, unless explicitly stated otherwise.

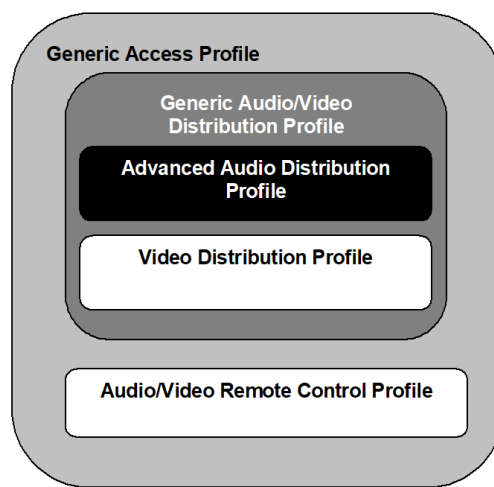


Figure 1.1: Profile dependencies

1.3 Symbols and conventions

1.3.1 Requirement status symbols

In this document the following symbols are used:

‘M’ for mandatory to support (used for capabilities that shall be used in the profile).

‘O’ for optional to support (used for capabilities that may be used in the profile).

‘C’ for conditional support (used for capabilities that shall be used in case a certain other capability is supported).

‘X’ for excluded (used for capabilities that may be supported by the unit, but that shall never be used in the profile).

‘N/A’ for not applicable (in the given context it is impossible to use this capability).

Some excluded capabilities are capabilities that, according to the relevant Bluetooth specification, are mandatory. These are features that may degrade operation of devices following this profile. Therefore, these features shall never be activated while a unit is operating as a unit within this profile.

1.4 Bluetooth A2DP Profile change history

1.4.1 Changes from 1.3 to 1.4

1.4.1.1 New features

- Addition of new Object Types for MPEG-2,4 AAC for MPEG-4 HE-AAC, HE-AACv2, and AAC-ELDv2
- Addition of support for MPEG-D DRC
- Addition of support for MPEG-D USAC
- Clarification that apart from SBC, the specification contains codec interoperability requirements and not the codecs themselves

1.4.2 Changes from v1.4 to v1.4.1

Section	Errata
2.5: Conformance	23748
5.1.3: Error codes	25272
5.3: SDP interoperability requirements	22841, 27471
5.5: Link Controller interoperability requirements	27471

Table 1.1: Errata incorporated in v1.4.1



1.5 Language

1.5.1 Language conventions

The Bluetooth SIG has established the following conventions for use of the words **shall**, **must**, **will**, **should**, **may**, **can**, and **note** in the development of specifications:

shall	<u>is required to</u> – used to define requirements.
must	is used to express: a natural consequence of a previously stated mandatory requirement. OR an indisputable statement of fact (one that is always true regardless of the circumstances).
will	<u>it is true that</u> – only used in statements of fact.
should	<u>is recommended that</u> – used to indicate that among several possibilities one is recommended as particularly suitable, but not required.
may	<u>is permitted to</u> – used to allow options.
can	<u>is able to</u> – used to relate statements in a causal manner.
note	Text that calls attention to a particular point, requirement, or implication or reminds the reader of a previously mentioned point. It is useful for clarifying text to which the reader ought to pay special attention. It shall not include requirements. A note begins with “Note:” and is set off in a separate paragraph. When interpreting the text, the relevant requirement shall take precedence over the clarification.

If there is a discrepancy between the information in a figure and the information in other text of the specification, the text prevails. Figures are visual aids including diagrams, message sequence charts (MSCs), tables, examples, sample data, and images. When specification content shows one of many alternatives to satisfy specification requirements, the alternative shown is not intended to limit implementation options. Other acceptable alternatives to satisfy specification requirements may also be possible.

1.5.2 Reserved for Future Use

Where a field in a packet, Protocol Data Unit (PDU), or other data structure is described as "Reserved for Future Use" (irrespective of whether in uppercase or lowercase), the device creating the structure shall set its value to zero unless otherwise specified. Any device receiving or interpreting the structure shall ignore that field; in particular, it shall not reject the structure because of the value of the field.

Where a field, parameter, or other variable object can take a range of values, and some values are described as "Reserved for Future Use," a device sending the object shall not set the object to those values. A device receiving an object with such a value should reject it, and any data structure containing it, as being erroneous; however, this does not apply in a context where the object is described as being ignored or it is specified to ignore unrecognized values.

When a field value is a bit field, unassigned bits can be marked as Reserved for Future Use and shall be set to 0. Implementations that receive a message that contains a Reserved for Future Use bit that is set to 1 shall process the message as if that bit was set to 0, except where specified otherwise.

The acronym RFU is equivalent to Reserved for Future Use.

1.5.3 Prohibited

When a field value is an enumeration, unassigned values can be marked as “Prohibited.” These values shall never be used by an implementation, and any message received that includes a Prohibited value shall be ignored and shall not be processed and shall not be responded to.

Where a field, parameter, or other variable object can take a range of values, and some values are described as “Prohibited,” devices shall not set the object to any of those Prohibited values. A device receiving an object with such a value should reject it, and any data structure containing it, as being erroneous.

“Prohibited” is never abbreviated.

2 Profile overview

2.1 Profile stacks

Figure 2.1 shows the protocols and entities used in this profile.

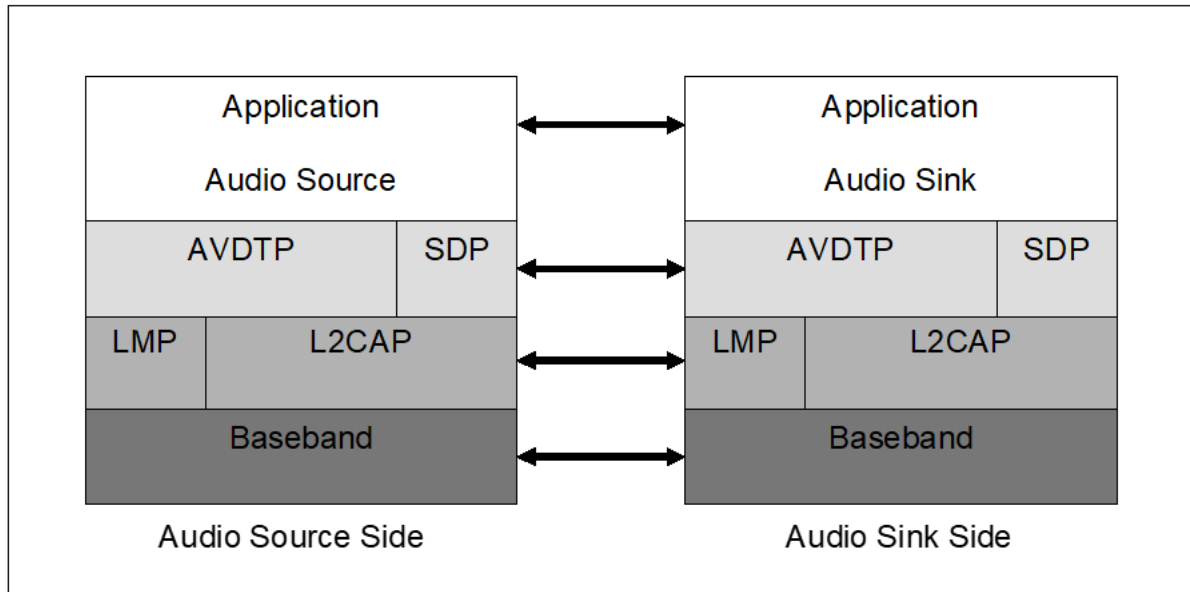


Figure 2.1: Protocol model

The Baseband, Link Manager Protocol (LMP), Logical Link Control and Adaptation Protocol (L2CAP), and Service Discovery Protocol (SDP) Bluetooth protocols are defined in the Bluetooth Core Specification [1]. Audio/Video Distribution Transport Protocol (AVDTP) [4] consists of a signaling entity for negotiation of streaming parameters and a transport entity that handles streaming itself.

The Application layer shown in Figure 2.1 is the entity in which the device defines application service and transport service parameters. The entity also adapts the audio streaming data into the defined packet format, or vice versa.

For the shaded protocols/entities in Figure 2.1, the GAVDP applies, except in those cases where this profile explicitly states deviations.

2.2 Configurations and roles

The following roles are defined for devices that implement this profile:

Source (SRC) – A device is the SRC when it acts as a source of a digital audio stream that is delivered to the SNK of the piconet.

Sink (SNK) – A device is the SNK when it acts as a sink of a digital audio stream delivered from the SRC on the same piconet.

Examples of configurations illustrating the roles for this profile are depicted in [Figure 2.2](#).

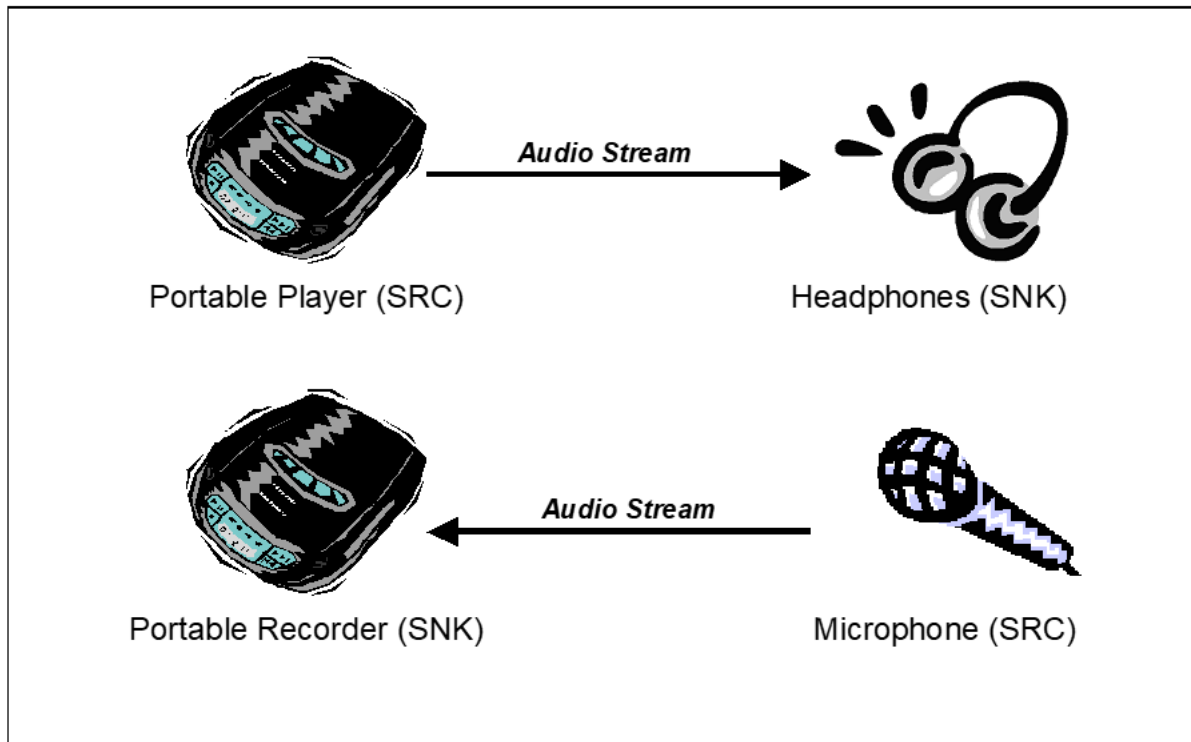


Figure 2.2: Examples of configuration

2.3 User requirements and scenarios

The following scenario is covered by this profile:

- Setup/control/manipulate a streaming of audio data from the SRC to the SNK(s).

The following restrictions are applied to this profile:

1. The profile does not support a synchronized point-to-multipoint distribution.
2. There exists certain delay between the SRC and the SNK because of radio signal processing, data buffering, and encode/decode of the stream data. Countering the effects of such delays depends on implementation.

The following requirements are set in this profile:

1. The audio data rate should be sufficiently smaller than usable bit rate on the Bluetooth link. This is to allow retransmission schemes to reduce the effects of packet loss.
2. The profile does not exclude any content protection method.

2.4 Profile fundamentals

The profile fundamentals are same as defined in the GAVDP in addition to the following requirement.

Content Protection is provided at the application level and is not a function of the Bluetooth link level security protocol.

2.5 Conformance

Each capability of this specification shall be supported in the specified manner. This specification may provide options for design flexibility, because, for example, some products do not implement every portion of the specification. For each implementation option that is supported, it shall be supported as specified.

3 Application layer

This section describes the feature requirements on units complying with the A2DP.

Table 3.1 shows the feature requirements for this profile.

Item No.	Feature	Support in SRC	Support in SNK
1	Audio Streaming	M	M

Table 3.1: Application layer features

Table 3.2 maps each feature to the procedures used for that feature, and shows whether the procedure is optional, mandatory, or conditional. The procedures are described in the reference section.

Item No.	Feature	Procedure	Ref.	Support in SRC	Support in SNK
1	Audio Streaming	Send Audio Stream	3.2.1	M	N/A
		Receive Audio Stream	3.2.2	N/A	M

Table 3.2: Application layer feature to procedure mapping

3.1 Audio Streaming setup

If the AVDTP version of the remote device is unknown, the device shall perform an SDP query to get the AVDTP version on the remote device. This shall be performed before the GAVDP_ConnectionEstablishment procedure is performed. This is required because some commands in the audio streaming setup procedure depend on the AVDTP version.

When a device is scheduled to start streaming of audio content, the device firstly needs to set up a streaming connection. Signaling procedures and typical signaling flows are illustrated in Section 3.1 and Appendix A of GAVDP [3], respectively. During such set up procedure, the devices select the most suitable audio streaming parameters. There are two kinds of services configured; one is an application service capability, and the other is a transport service capability. (For details, see Section 4.4 in AVDTP [4].) This profile specifies audio-specific parameters necessary for these signaling procedures. An example of how the session signaling is performed is described in Appendix A in GAVDP [3] and in Appendix C of this specification.

The application service capability for A2DP consists of audio codec capability and content protection capability. Requirements for audio codec interoperability and details of codec parameters such as mode, sampling frequency, and bit rate are described in Section 4. The content protection capability is described in Appendix A.

The transport service capability is provided by AVDTP in order to manipulate the streaming packets more intelligently. Appropriate configuration of these services increases channel throughput. Available services are listed in Section 5.1.2.

3.2 Audio Streaming

Once streaming connection is established and the Start Streaming procedure in GAVDP [3] is executed, both the SRC and the SNK are in the STREAMING state, in which the SRC (SNK) is ready to send

(receive) an audio stream. (See Section 3.1 in GAVDP [3].) The SRC uses the Send Audio Stream procedure to send audio data to the SNK, which in turn employs the Receive Audio Stream procedure to receive the audio data. The block diagrams of these procedures and created packet format are shown in Figure 3.1. In Section 4, audio-specific parameters in AVDTP header and media payload format are also specified.

Note again that the devices shall be in the STREAMING state to send/receive audio stream. If the SRC/SNK is scheduled to send/receive the audio stream whereas the state is still at OPEN, the SRC/SNK shall initiate Start Streaming procedure defined in GAVDP.

3.2.1 Send Audio Stream

In the Send Audio Stream procedure, the SRC shall, if needed, encode the data into a selected format in the signaling session. Then, the application layer of the SRC shall adapt the encoded data into the defined media payload format. The frame of encoded audio data is adapted to the defined payload format as defined in Section 4.

When content protection is in use, a content protection header may precede encrypted audio content. This is content protection method dependent.

Afterwards, the stream data shall be handed down to the AVDTP entity through the exposed interface (Interface 4) defined in Section 2 in AVDTP [4]. The stream data shall be sent out on the transport channel using the selected transport services defined in Section 5.4 in AVDTP [4].

3.2.2 Receive Audio Stream

The AVDTP entity of the SNK shall receive the stream data from the transport channel using the selected transport services and pass it to the application layer by exposed interface defined in Section 2 in AVDTP [4].

When a content protection method is active, the application layer of the SNK shall process the retrieved AVDTP payload as described by the content protection method. Typically, this processing entails content protection header analysis and decryption of associated encrypted content.

If applicable, the frame of audio data shall be decoded according to the selected coding format.

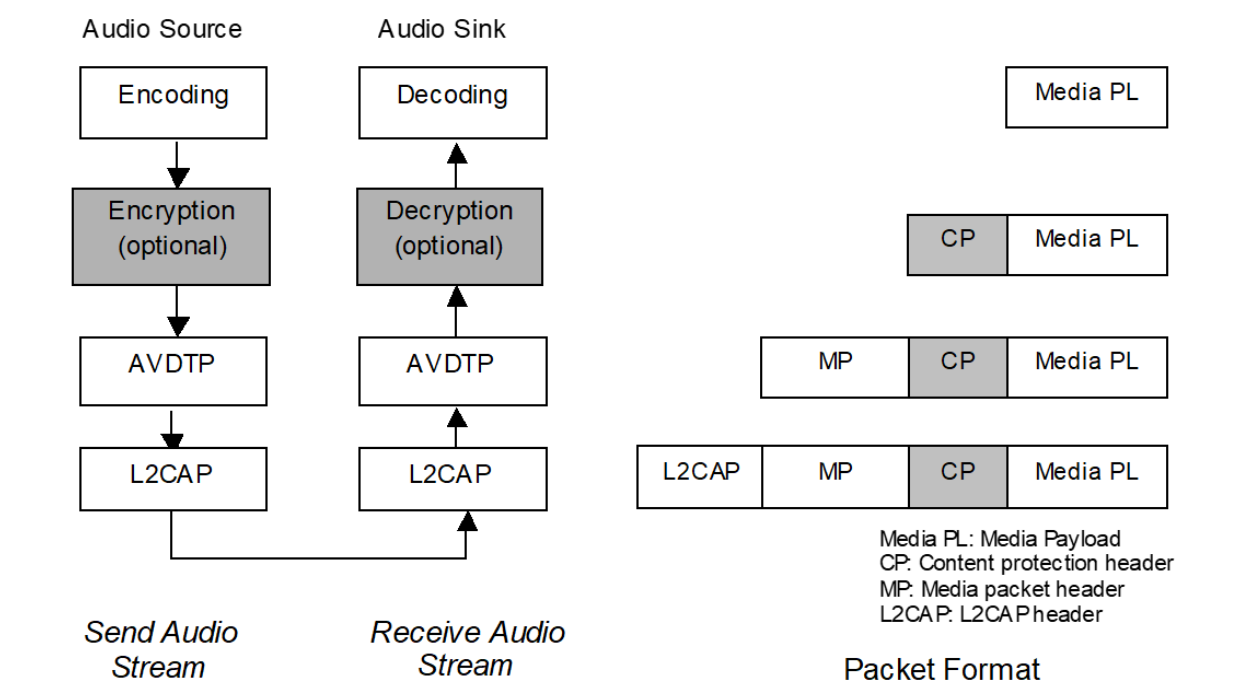


Figure 3.1: Block diagram of Audio Streaming procedures and the packet format

4 Audio codec interoperability requirements

4.1 Overview

This section defines necessary information required for audio codec interoperability. [Section 4.2](#) summarizes the supported codec interoperability requirements.

Remaining sections provide details of the interoperability requirements for each supported codec including:

- *Audio codec capabilities* define the capability field and its parameters necessary for signaling procedures in the streaming setup. Related procedures in GAVDP are Connection Establishment and Change Parameters procedures.
- *Media packet header requirements* define codec-specific parameters in the media packet header, which shall be added to the media payload in the AVDTP entity. (See [Figure 3.1](#).)
- *Media payload format* defines the codec-specific payload format in the AVDTP packet, which shall be used in the Audio Streaming procedures in [Section 3.2](#). See also [Figure 3.1](#).

4.2 Support of codec interoperability requirements

[Table 4.1](#) shows supported codec interoperability requirements.

Codec Interoperability Requirements	Support	Ref.
SBC	M	4.3
MPEG-1,2 Audio	O	4.4
MPEG-2,4 AAC	O	4.5
ATRAC family	O	4.6
MPEG-D USAC	O	4.8

Table 4.1: Supported codec interoperability requirements

When supporting a specific codec interoperability requirement, the device shall use the corresponding Audio Codec Type as defined in Bluetooth Assigned Numbers [\[5\]](#).

The following codec interoperability requirements are treated as Vendor Specific A2DP:

- Codec interoperability requirements that are not in [Table 4.1](#) and Bluetooth Assigned Numbers [\[5\]](#).
- Codec interoperability requirements that do not comply with any in this specification.
- Vendor Specific A2DP codec interoperability requirements defined in [Section 4.2.3](#) and [4.7](#).

4.2.1 Mandatory codec interoperability requirements

A2DP mandates low complexity subband Coding (SBC). The device shall implement an SBC encoder when the device is the SRC. The SBC encoder output shall be compliant with SBC bitstream syntax. The subjective quality (measured by a standardized way or by objective testing methods, see [\[15\]](#) and [\[16\]](#)) shall be equivalent to that of the reference SBC encoder. The device shall implement an SBC decoder when the device is the SNK. The SBC decoder shall be able to decode SBC bitstream syntax. The output

of the SBC decoder shall satisfy at least the 14-bit criteria that are defined in the Conformance Test Suite of SBC [14].

4.2.2 Optional codec interoperability requirements

The device may optionally support other codec interoperability requirements defined in this section to maximize its usability. When both the SRC and the SNK support the same Optional codec interoperability requirements, these may be used. Optional codec interoperability requirements supported by this profile are listed in Table 4.1 and additionally defined in Bluetooth Assigned Numbers [5]. To maintain interoperability, the requirements in Section 4.2.4 shall be applied.

4.2.3 Vendor Specific A2DP codec interoperability requirements

The device may support codec interoperability requirements not detailed in this specification. These are known as Vendor Specific A2DP codec interoperability requirements. A user of Vendor Specific A2DP codec interoperability requirements (hereafter the Vendor) will need to define parameters and other information necessary for use of the codec interoperability requirements. The profile does not specify anything for Vendor Specific A2DP codec interoperability requirements. To maintain interoperability, the requirements in Section 4.2.4 shall be applied.

4.2.4 Unsupported codec interoperability requirements

As a consequence of the requirement in Section 3.2.1 to encode the audio data, in order for the SRC to send audio data whose codec interoperability requirements are not mutually supported by the SRC and the SNK, the audio data must be transcoded into a mutually supported format.

4.2.5 Audio Codec Type values

Refer to Audio Codec Type in Bluetooth Assigned Numbers [5] for specific values for Audio Codec Types. Message format of audio codec capabilities is defined in Section 8.21.5 in AVDTP [4]. The Audio Codec Type values are used in AVDTP when the Media Type equals audio.

The following section defines audio codec parameters and formats required for audio streaming on the Bluetooth link.

4.3 SBC codec interoperability requirements

4.3.1 Reference

It is mandatory to support SBC codec interoperability requirements in this profile. The SBC specification is a part of the Bluetooth specification. The codec specification is attached in Appendix B of this profile.

4.3.2 Codec Specific Information Elements

Figure 4.1 shows the Codec Specific Information Elements field for SBC used in the signaling procedures. For reference, see Section 8.21.5 in AVDTP [4]. The following section defines the field values and their requirements. The meaning of each value is defined in the SBC specification in Appendix B. If the packet includes improper settings, the error code shall be returned as specified in Section 5.1.3.

7	6	5	4	3	2	1	0	
Sampling Frequency				Channel Mode				Octet0
Block Length				Subbands		Allocation Method		Octet1
Minimum Bitpool Value								Octet2
Maximum Bitpool Value								Octet3

Figure 4.1: Codec Specific Information Elements for SBC

In the AVDTP_GET_ALL_CAPABILITIES_RSP message of AVDTP, one or more bits may be defined/set in each field. On the other hand, in the AVDTP_SET_CONFIGURATION_CMD message and the AVDTP_RECONFIGURE_CMD message of AVDTP, only one bit shall be defined/set in each field.

4.3.2.1 Sampling Frequency

Table 4.2 shows the value of the Sampling Frequency field for SBC. For the decoder in the SNK, the sampling frequencies 44.1 kHz and 48 kHz are mandatory to support. The encoder in the SRC shall support at least one of the sampling frequencies of 44.1 kHz and 48 kHz.

Position	Sampling Frequency (Hz)	Support in SRC	Support in SNK
Octet0; b7	16000	O	O
Octet0; b6	32000	O	O
Octet0; b5	44100	C1	M
Octet0; b4	48000	C1	M
C1: At least one of the values shall be supported			

Table 4.2: Sampling Frequency for SBC

4.3.2.2 Channel Mode

Table 4.3 shows the value of the Channel Mode field for SBC. For the decoder in the SNK, all features shall be supported. The encoder in the SRC shall support at least MONO and one of DUAL CHANNEL, STEREO and JOINT STEREO modes.

Position	Channel Mode	Support in SRC	Support in SNK
Octet0; b3	MONO	M	M
Octet0; b2	DUAL CHANNEL	C1	M
Octet0; b1	STEREO	C1	M
Octet0; b0	JOINT STEREO	C1	M
C1: At least one of the values shall be supported			

Table 4.3: Channel Mode for SBC



4.3.2.3 Block Length

Table 4.4 shows the value of the Block Length field for SBC. Both the encoder in the SRC and the decoder in the SNK shall support all of the parameters.

Position	Block length	Support in SRC	Support in SNK
Octet1; b7	4	M	M
Octet1; b6	8	M	M
Octet1; b5	12	M	M
Octet1; b4	16	M	M

Table 4.4: Block Length for SBC

4.3.2.4 Subbands

Table 4.5 shows the value of Number of Subbands field for SBC. For the decoder in the SNK, all features shall be supported. The encoder in the SRC shall support at least 8 subbands case.

Position	Number of Subbands	Support in SRC	Support in SNK
Octet1; b3	4	O	M
Octet1; b2	8	M	M

Table 4.5: Number of Subbands for SBC

4.3.2.5 Allocation Method

Table 4.6 shows the value of the Allocation Method field for SBC. For the decoder in the SNK, all features shall be supported. The encoder in the SRC shall support at least the LOUDNESS method.

Position	Allocation method	Support in SRC	Support in SNK
Octet1; b1	SNR	O	M
Octet1; b0	Loudness	M	M

Table 4.6: Allocation Method for SBC

4.3.2.6 Minimum / Maximum Bitpool Value

The device sets the range of SBC bitpool parameters using the Minimum / Maximum Bitpool Value fields expressed by 8-bit UiMsb, ranging from 2 to 250. In the Get All Capabilities procedure in AVDTP, the Minimum / Maximum Bitpool Value fields contain an allowed variable range of the bitpool value in the Acceptor (ACP), while in the Stream Configuration or Stream Reconfigure procedure in AVDTP, the fields contain a variable range of the bitpool value that the Initiator (INT) expects to send/receive.

Using the bitpool value and other codec parameters (sampling frequency, channel mode, block length, and the number of subbands), the bit rate and frame length of the audio stream is calculated as shown in Section B.9.

The codec information that determines the bit rate is contained in the SBC frame header and repeatedly sent to the SNK associated with the audio data stream. The SRC is capable of changing the bit

rate dynamically by changing the bitpool parameter without suspending. The other parameters can be changed during the Change Parameters procedure defined in GAVDP.

The decoder of the SNK shall support 2 as the Minimum Bitpool Value and High Quality Bitpool value in [Table 4.7](#) as the Maximum Bitpool Value at a minimum.

A SNK device may support bitpools larger than the High Quality value in [Table 4.7](#), but shall be required to demonstrate the ability to acceptably render the resulting media.

For the encoder of the SRC, it shall support at least one possible bitpool value. However, it is recommended for the encoder to support the following settings shown in [Table 4.7](#).

SBC Encoder Settings*	Middle Quality				High Quality			
	Mono		Joint Stereo		Mono		Joint Stereo	
Sampling frequency (kHz)	44.1	48	44.1	48	44.1	48	44.1	48
Bitpool value	19	18	35	33	31	29	53	51
Resulting frame length (bytes)	46	44	83	79	70	66	119	115
Resulting bit rate (kb/s)	127	132	229	237	193	198	328	345
*Other settings: Block length = 16, Allocation method = Loudness, Subbands = 8								

Table 4.7: Recommended sets of SBC parameters in the SRC device

Note again that the frame length shown in this table is variable according to the bitpool value. For the most efficient use of the transport in L2CAP, the frame length may be adjusted when the media payload is constructed. For the creation of the media payload format using SBC frames, see [Section 4.3.4](#).

The decoder of the SNK shall support all possible bitpool values that do not result in excess of the maximum bit rate. This profile limits the available maximum bit rate to 320kb/s for mono, and 512kb/s for two-channel modes.

4.3.3 Media packet header requirements

4.3.3.1 Timestamp (TS)

The clock frequency necessary to create TS shall be set to the sample rate of the encoded audio data.

If a media payload consists of multiple SBC frames, the TS of the media packet header represents the TS of the first SBC frame. The TS of the following SBC frames shall be calculated using the sample rate and the number of samples per frame per channel.

When an SBC frame is fragmented into multiple media packets, all packets that make up a fragmented SBC frame shall use the same TS.

4.3.3.2 Payload type (PT)

A payload type in the RTP dynamic range shall be chosen (see Section 3 in [\[17\]](#)).

4.3.3.3 Marker (M) bit

Shall be set to zero.



4.3.3.4 Extension (X) bit

Not used and shall be set to zero.

4.3.4 Media payload format

The media payload for SBC shown in [Figure 4.2](#) consists of an SBC-specific header and SBC frame(s) defined in the SBC specification.

If the configured MTU size for the transport channel is greater or equal to the SBC frame size + the sum of [media payload header size, Content Protection header size (if Content Protection is selected), media packet header size], then a media payload shall contain an integral number of complete SBC frames (see format (a) shown in [Figure 4.2](#)).

If this is not the case, and if the multiplexing service of AVDTP is not selected, the SBC frame shall be fragmented across several media payloads (see format (b) shown in [Figure 4.2](#)). All fragmented packets, except the last one, shall have the same total data packet size. A media payload always starts with an 8-bit header, which is placed before the SBC data. If the multiplexing service of AVDTP is selected, then it is recommended not to fragment the SBC frame across several media payloads, because AVDTP will fragment the media payloads across several L2CAP packets if necessary.

(a) When the media payload contains an integral number of SBC frames



(b) When the SBC frame is fragmented

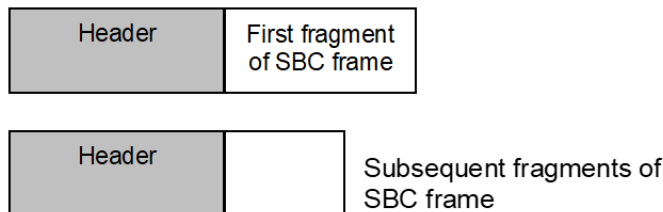


Figure 4.2: Media payload format of SBC

[Figure 4.3](#) shows the media payload header format of SBC.

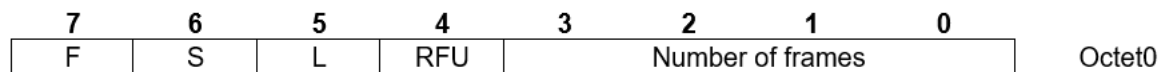


Figure 4.3: Header format of media payload for SBC

- *F bit* – Set to 1 if the SBC frame is fragmented, otherwise set to 0.
- *S bit* – Set to 1 for the starting packet of a fragmented SBC frame, otherwise set to 0.
- *L bit* – Set to 1 for the last packet of a fragmented SBC frame, otherwise set to 0
- *Number of frames* (4 bits) – If the *F bit* is set to 0, this field indicates the number of frames contained in this packet. If the *F bit* is set to 1, this field indicates the number of remaining fragments, including

the current fragment. Therefore, the last counter value shall be one. For example, if there are three fragments, then the counter has value 3, 2 and 1 for subsequent fragments. This field is expressed by 4-bit UiMsbF.

4.4 MPEG-1,2 Audio codec interoperability requirements

4.4.1 Reference

For MPEG-1 Audio, refer to [7]. For MPEG-2 Audio, refer to [8].

4.4.2 Codec Specific Information Elements

Figure 4.4 shows the Codec Specific Information Elements field for MPEG-1,2 Audio used in the signaling procedures. For reference, see Section 8.21.5 in AVDTP [4]. The following section defines the field values and their requirements. The meaning of each value is defined in [7] and [8]. If MPEG-1,2 Audio is supported, the requirements for each field in Figure 4.4 are shown in Table 4.8 to Table 4.13. If the packet includes improper settings, the error code shall be returned as specified in Section 5.1.3.

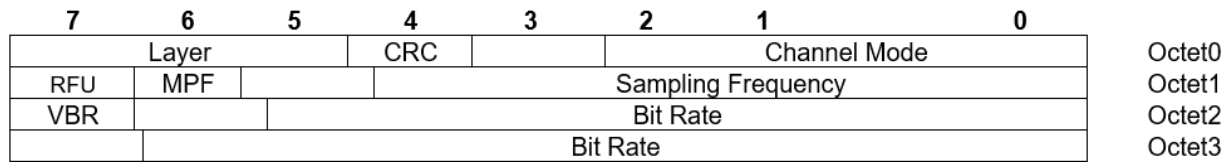


Figure 4.4: Codec Specific Information Elements for MPEG-1,2 Audio

In the AVDTP_GET_ALL_CAPABILITIES_RSP message of AVDTP, one or more values may be defined/set in each field. On the other hand, in the AVDTP_SET_CONFIGURATION_CMD message and the AVDTP_RECONFIGURE_CMD message of AVDTP, only one value shall be defined/set in each field.

4.4.2.1 Layer

Table 4.8 shows the value of Layer defined in MPEG-1,2 Audio. The SRC and the SNK shall support at least one of Layer I (mp1), Layer II (mp2) and Layer III (mp3).

Position	Layer	Support in SRC	Support in SNK
Octet0; b7	Layer I (mp1)	C1	C2
Octet0; b6	Layer II (mp2)	C1	C2
Octet0; b5	Layer III (mp3)	C1	C2
C1: At least one of the values shall be supported			
C2: At least one of the values shall be supported			

Table 4.8: Layers for MPEG-1,2 Audio

4.4.2.2 CRC Protection

Support of Cyclic Redundancy Check (CRC) Protection is mandatory in the SNK and optional in the SRC.

Position	CRC Protection	Support in SRC	Support in SNK
Octet0; b4	Protection supported	O	M

Table 4.9: CRC Protection assignment for MPEG-1,2 Audio

4.4.2.3 Channel Mode

Table 4.10 shows the value of the Channel Mode field for MPEG-1,2 Audio. For the decoder in the **SNK**, all features shall be supported. The encoder in the **SRC** shall support at least one of MONO, DUAL CHANNEL, STEREO, and JOINT STEREO modes.

Position	Channel Mode	Support in SRC	Support in SNK
Octet0; b3	MONO	C1	M
Octet0; b2	DUAL CHANNEL	C1	M
Octet0; b1	STEREO	C1	M
Octet0; b0	JOINT STEREO	C1	M
C1: At least one of the values shall be supported			

Table 4.10: Channel Mode for MPEG-1,2 Audio

4.4.2.4 Media payload format (MPF)

The MPF field indicates the support of media payload format for MPEG-1,2 Audio. It is mandatory to support MPF-1 in [Section 4.4.4](#). The MPF field is set to 1 if MPF-2 in [Section 4.4.4](#) is also supported, or if MPF-2 is configured as a transferred media payload format; otherwise it is set to 0.

4.4.2.5 Sampling Frequency

Table 4.11 shows the value of the Sampling Frequency field for MPEG-1,2 Audio. For the decoder in the SNK, the sampling frequencies 44.1 kHz and 48 kHz are mandatory to support. The encoder in the SRC shall support at least one of the sampling frequencies of 44.1 kHz and 48 kHz. Other sampling frequencies are optional for both the SNK and the SRC.

Position	Sampling Frequency (Hz)	Support in SRC	Support in SNK
Octet1; b5	16000	O	O
Octet1; b4	22050	O	O
Octet1; b3	24000	O	O
Octet1; b2	32000	O	O
Octet1; b1	44100	C1	M

Position	Sampling Frequency (Hz)	Support in SRC	Support in SNK
Octet1; b0	48000	C1	M
C1: At least one of the values shall be supported			

Table 4.11: Sampling Frequency for MPEG-1,2 Audio

4.4.2.6 VBR

In this profile, support of variable bit rate (VBR) for MPEG-1,2 Audio is mandatory for the decoder in the SNK and optional for the encoder in the SRC. Layer I and Layer II do not mandate this parameter, but most of the actual devices commonly support it.

Position	VBR Support	Support in SRC	Support in SNK
Octet2; b7	VBR supported	O	M

Table 4.12: VBR support for MPEG-1,2 Audio

4.4.2.7 Bit Rate Index

Table 4.13 shows the value of the Bit Rate Index field for MPEG-1,2 Audio. The index value represents the actual bit rate value defined in the referenced specification. For the decoder in the SNK, all features shall be supported except for the index value '0000'. The encoder in the SRC shall support at least one of the index values that are mandatory to support in the SNK.

Note that MPEG-1 Layer II (mp2) has restriction in allowed combination of total bit rate and channel mode (for MPEG-1 see Section 2.4.2.3 in [7]). This restriction overrules the support of Bit Rate Index shown in Table 4.13.

Position	Bit Rate Index	Support in SRC	Support in SNK
Octet2; b6	'1110'	C1	M
Octet2; b5	'1101'	C1	M
Octet2; b4	'1100'	C1	M
Octet2; b3	'1011'	C1	M
Octet2; b2	'1010'	C1	M
Octet2; b1	'1001'	C1	M
Octet2; b0	'1000'	C1	M
Octet3; b7	'0111'	C1	M
Octet3; b6	'0110'	C1	M
Octet3; b5	'0101'	C1	M

Position	Bit Rate Index	Support in SRC	Support in SNK
Octet3; b4	'0100'	C1	M
Octet3; b3	'0011'	C1	M
Octet3; b2	'0010'	C1	M
Octet3; b1	'0001'	C1	M
Octet3; b0	'0000'	O	O
C1: At least one of the values shall be supported			

Table 4.13: Bit Rate Index for MPEG-1,2 Audio

When VBR is set, the Bit Rate Index field shall be neglected.

4.4.3 Media packet header requirements

The media packet header requirements for MPEG-1,2 Audio are contained in the specification of media payload format referenced in [Section 4.4.4](#).

4.4.4 Media payload format

MPEG-1,2 Audio uses payload formats defined in [9] and [10]. This profile mandates support of the format in MPF-1. MPF-2 provides more error-robustness for MPEG-1,2 Audio Layer III. See also [Section 4.4.2.4](#). For MPF-1, refer to [9]. For MPF-2, refer to [10].

4.5 MPEG-2, 4 AAC codec interoperability requirements

4.5.1 Reference

For MPEG-2 AAC, refer to [11]. For MPEG-4 AAC, HE-AAC, HE-AACv2, and AAC-ELDv2, refer to [12]. For MPEG-D DRC, refer to [19].

4.5.2 Codec Specific Information Elements

[Figure 4.5](#) defines the Codec Specific Information Elements field for MPEG-2,4 AAC used in the signaling procedures. For reference, see Section 8.21.5 in AVDTP [4]. If MPEG-2,4 AAC is supported, the requirements for each field in [Figure 4.5](#) are shown in [Table 4.14](#) to [Table 4.20](#). If the packet includes improper settings, the error code shall be returned as specified in [Section 5.1.3](#).

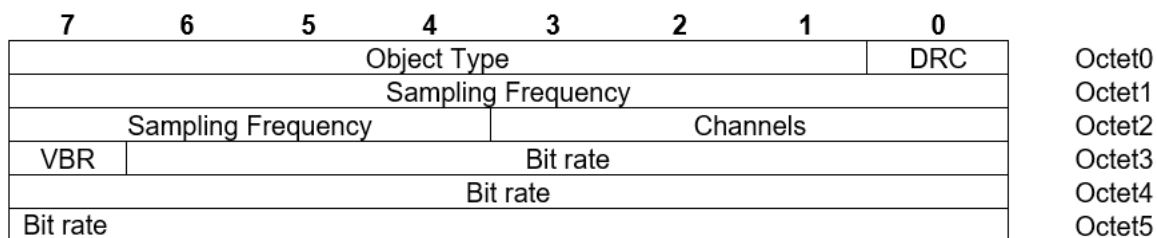


Figure 4.5: Codec Specific Information Elements for MPEG-2,4 AAC

In the AVDTP_GET_ALL_CAPABILITIES_RSP message of AVDTP, one or more values may be defined/set in each field. In the AVDTP_SET_CONFIGURATION_CMD message and the

AVDTP_RECONFIGURE_CMD message of AVDTP, only one value out of the optional and mandatory values shall be set.

4.5.2.1 Object Type

Table 4.14 shows the value of Object Type field for MPEG-2,4 AAC. The SRC and the SNK shall support MPEG-2 AAC LC, and other values are optional.

Position	Object Type	Support in SRC	Support in SNK
Octet0; b7	MPEG-2 AAC LC	M	M
Octet0; b6	MPEG-4 AAC LC	O	O
Octet0; b5	MPEG-4 AAC LTP	O	O
Octet0; b4	MPEG-4 AAC scalable	O	O
Octet0; b3	MPEG-4 HE-AAC	O	O
Octet0; b2	MPEG-4 HE-AACv2	O	O
Octet0; b1	MPEG-4 AAC-ELDv2	O	O

Table 4.14: Object Type for MPEG-2,4 AAC

Table 4.15 shows a mapping of Object Types used in A2DP to Audio Object Types and Profiles in ISO specifications.

A2DP Object Type	ISO Specification Name
MPEG-2 AAC LC	Low Complexity Profile in [11]
MPEG-4 AAC LC	AAC Profile in [12]
MPEG-4 AAC LTP	AAC LTP Audio Object Type in [12]
MPEG-4 AAC scalable	AAC Scalable Audio Object Type in [12]
MPEG-4 HE-AAC	High Efficiency AAC Profile in [12]
MPEG-4 HE-AACv2	High Efficiency AAC v2 Profile in [12]
MPEG-4 AAC-ELDv2	Low Delay AAC v2 Profile in [12]

Table 4.15: Mapping of A2DP Object Types to Audio Object Types and Profiles in ISO Specifications

4.5.2.2 MPEG-D DRC

Support of MPEG-D DRC is optional for both the encoder in the SRC and the decoder in the SNK.

Position	MPEG-D DRC Support	Support in SRC	Support in SNK
Octet0; b0	MPEG-D DRC	O	O

Table 4.16: MPEG-D DRC support for MPEG-2,4 AAC



MPEG-D DRC is not supported with MPEG-2 AAC LC. Therefore, if only MPEG-2 AAC LC is supported, Octet0; b0 (as described in [Table 4.16](#)) shall be set to 0.

4.5.2.3 Sampling Frequency

[Table 4.17](#) shows the value of the Sampling Frequency field for MPEG-2,4 AAC. For the decoder in the SNK the sampling frequencies 44.1 kHz and 48 kHz are mandatory to support. The encoder in the SRC shall support at least one of the sampling frequencies of 44.1 kHz and 48 kHz. Other sampling frequencies are optional for both the SNK and the SRC.

Position	Sampling Frequency (Hz)	Support in SRC	Support in SNK
Octet1; b7	8000	O	O
Octet1; b6	11025	O	O
Octet1; b5	12000	O	O
Octet1; b4	16000	O	O
Octet1; b3	22050	O	O
Octet1; b2	24000	O	O
Octet1; b1	32000	O	O
Octet1; b0	44100	C1	M
Octet2; b7	48000	C1	M
Octet2; b6	64000	O	O
Octet2; b5	88200	O	O
Octet2; b4	96000	O	O
C1: At least one of the values shall be supported			

Table 4.17: Sampling Frequency field for MPEG-2,4 AAC

4.5.2.4 Channels

[Table 4.18](#) shows the value of the Channels field for MPEG-2,4 AAC. The SNK shall support all configurations with up to two channels, while the SRC shall support at least one configuration with one or two channels. Other channel modes are optional for both the SNK and the SRC.

Position	Channels	Support in SRC	Support in SNK
Octet2; b3	1	C1	M
Octet2; b2	2	C1	M
Octet2; b1	6 (5.1)	O	O

Position	Channels	Support in SRC	Support in SNK
Octet2; b0	8 (7.1)	O	O
C1: At least one of the values shall be supported			

Table 4.18: Channels field for MPEG-2,4 AAC

4.5.2.5 Bit rate

Bit rate field is assigned for the bit rate in bits per second in case of a constant rate stream, or the maximum peak bit rate (measured per frame) in case of a VBR stream. A value of 0 indicates that the bit rate is not known. The field is expressed as a 23-bit UIMsf as described in Table 4.19.

Octet 3 (bits 6... 0)							Octet 4							Octet 5								
b22	b21	b20	b19	b18	b17	b16	b15	b14	b13	b12	b11	b10	b9	b8	b7	b6	b5	b4	b3	b2	b1	b0

Table 4.19: Bit order for Bit rate field of MPEG-2,4 AAC

4.5.2.6 VBR

Support of VBR is mandatory for the decoder in the **SNK** and optional for the encoder in the **SRC**.

Position	VBR Support	Support in SRC	Support in SNK
Octet3; b7	VBR supported	O	M

Table 4.20: VBR support for MPEG-2,4 AAC

4.5.3 Media packet header requirements

The media packet header requirements for MPEG-2,4 AAC are contained in the specification of media payload format referenced in Section 4.5.4.

4.5.4 Media payload format

MPEG-2,4 AAC use the media payload format defined in [13]. The value of the *muxConfigPresent* parameter (as defined in [13]) shall be set to 1. The specification defines the payload format only for MPEG-4 audio; in use of MPEG-2 AAC LC, the audio stream shall be transformed to MPEG-4 AAC LC in the SRC by modifying the codec information and adapted into MPEG-4 LATM format before being put into media payload format. The SNK shall retransform the stream into MPEG-2 AAC LC, if necessary.¹ For details, see [11] and [12].

4.6 ATRAC family codec interoperability requirements

4.6.1 Reference

The ATRAC family is a proprietary codec owned by Sony Corporation. Licensed users obtain the specifications of this codec. For details of license, contact Sony Corporation through the following e-mail address: bt-atrac3@jp.sony.com.

¹When the MPEG-4 AAC LC is supported in the **SNK**, it is possible to decode the data as it is.

4.6.2 Codec Specific Information Elements

Figure 4.6 shows the Codec Specific Information Elements field for the ATRAC family used in the signaling procedures. For reference, see Section 8.21.5 of AVDTP [4]. The following section defines the field values and their requirements. If the ATRAC family is supported, the requirements for each field in Figure 4.6 are shown in Table 4.21 to Table 4.25. If the packet includes improper settings, the error code shall be returned as specified in Section 5.1.3

7	6	5	4	3	2	1	0	
Version			Channel Mode			RFU		Octet0
RFU		Fs		VBR	Bit Rate			Octet1
Bit Rate								Octet2
Bit Rate								Octet3
Maximum SUL								Octet4
RFU								Octet5
								Octet6

Figure 4.6: Codec Specific Information Elements for the ATRAC family

In the AVDTP_GET_ALL_CAPABILITIES_RSP message of AVDTP, one or more values may be defined/set in each field. On the other hand, in the AVDTP_SET_CONFIGURATION_CMD message and the AVDTP_RECONFIGURE_CMD message of AVDTP, only one value shall be defined/set in each field.

4.6.2.1 Version

Table 4.21 shows the value of the Version field for the ATRAC family. The Version field contains one specific version of the ATRAC family. Therefore, if for example, the device supports both ATRAC and ATRAC3, two different Stream Endpoints shall be used.

Bits			Version
7	6	5	
0	0	1	ATRAC
0	1	0	ATRAC2
0	1	1	ATRAC3
Other values			RFU.

Table 4.21: Version for the ATRAC family

4.6.2.2 Channel Mode

Table 4.22 shows the value of the Channel Mode field for the ATRAC family. The SRC and the SNK shall support at least one of the values.

Position	Channel Mode	Support in SRC	Support in SNK
Octet0; b4	Single channel	C1	C2

Position	Channel Mode	Support in SRC	Support in SNK
Octet0; b3	Dual channel	C1	C2
Octet0; b2	Joint stereo	C1	C2
C1, C2: At least one of the values shall be supported. For the additional conditions, refer to the specifications of the ATRAC family.			

Table 4.22: Channel Mode for the ATRAC family

4.6.2.3 Fs (Sampling Frequency)

Table 4.23 shows the value of the Sampling Frequency field for ATRAC family. The SRC and the SNK shall support at least one of the values.

Position	Sampling Frequency (Hz)	Support in SRC	Support in SNK
Octet1; b5	44100	C1	C2
Octet1; b4	48000	C1	C2
C1, C2: At least one of the values shall be supported. For the additional conditions, refer to the specifications of ATRAC family.			

Table 4.23: Sampling Frequency for the ATRAC family

4.6.2.4 VBR

Support of VBR for the ATRAC family is optional both for the SRC and the SNK.

Note that when the VBR is supported, the Bit Rate Index field in Section 4.6.2.5 shall be neglected because the device can adopt any bit rate under the *Maximum SUL* value described in Section 4.6.2.6. When the VBR is not applied, the *Bit Rate Index* field explicitly indicates supported bit rate, while the *Maximum SUL* field shall be neglected.

Position	VBR Support	Support in SRC	Support in SNK
Octet1; b3	VBR supported	O	O

Table 4.24: VBR support for the ATRAC family

4.6.2.5 Bit Rate Index

Table 4.25 shows the value of the Bit Rate Index field for the ATRAC family. The index value represents the actual bit rate value defined in the referenced specification. At least one of the values shall be supported for both the SRC and the SNK.

Position	Bit Rate Index	Support in SRC	Support in SNK
Octet1; b2	0x0000	C1	C2
Octet1; b1	0x0001	C1	C2
Octet1; b0	0x0002	C1	C2
Octet2; b7	0x0003	C1	C2
Octet2; b6	0x0004	C1	C2
Octet2; b5	0x0005	C1	C2
Octet2; b4	0x0006	C1	C2
Octet2; b3	0x0007	C1	C2
Octet2; b2	0x0008	C1	C2
Octet2; b1	0x0009	C1	C2
Octet2; b0	0x000a	C1	C2
Octet3; b7	0x000b	C1	C2
Octet3; b6	0x000c	C1	C2
Octet3; b5	0x000d	C1	C2
Octet3; b4	0x000e	C1	C2
Octet3; b3	0x000f	C1	C2
Octet3; b2	0x0010	C1	C2
Octet3; b1	0x0011	C1	C2
Octet3; b0	0x0012	C1	C2
C1, C2: At least one of the values shall be supported. For the additional conditions, refer to the specifications of the ATRAC family.			

Table 4.25: Bit Rate Index for the ATRAC family

4.6.2.6 Maximum SUL

Sound Unit Length (SUL) is one of the parameters that determine the bit rate of the audio stream. The Maximum SUL field with 16-bit UiMsb contains the maximum value (expressed in Byte) of the SUL that the decoder in the SNK supports. The SRC shall send audio streaming data whose SUL is equal to or smaller than that of maximum SUL of the decoder in the SNK.

The maximum SUL value in the SNK shall be notified to the SRC during the Get All Capabilities procedure of AVDTP initiated by the SRC, or during the Stream Configuration procedure of AVDTP initiated by the SNK.

4.6.3 Media packet header requirements

4.6.3.1 Timestamp (TS)

The clock frequency necessary to create TS shall be set to the sample rate of the encoded audio data.

If a media payload consists of multiple codec frames of the ATRAC family, the TS of the media packet header represents the TS of the first codec frame. The TS of the following codec frames shall be calculated using the sample rate and the number of samples per frame per channel.

4.6.3.2 Payload type (PT)

A payload type in the RTP dynamic range shall be chosen (see Section 3 in [17]).

4.6.3.3 Marker (M) bit

Shall be set to zero.

4.6.3.4 Extension (X) bit

Not used and shall be set to zero.

4.6.4 Media payload format

Licensed users obtain the specification of the media payload format for the ATRAC family. See Section 4.6.1.

4.7 Vendor Specific A2DP codec interoperability requirements

4.7.1 Reference

The definition and treatment of the Vendor Specific A2DP codec interoperability requirements are defined in Section 4.2.3.

4.7.2 Codec Specific Information Elements

Figure 4.7 shows the Codec Specific Information Elements field for the Vendor Specific A2DP codecs used in the signaling procedures. For reference, see Section 8.21.5 in AVDTP [4]. If the packet includes improper settings, the error code shall be returned as specified in Section 5.1.3.

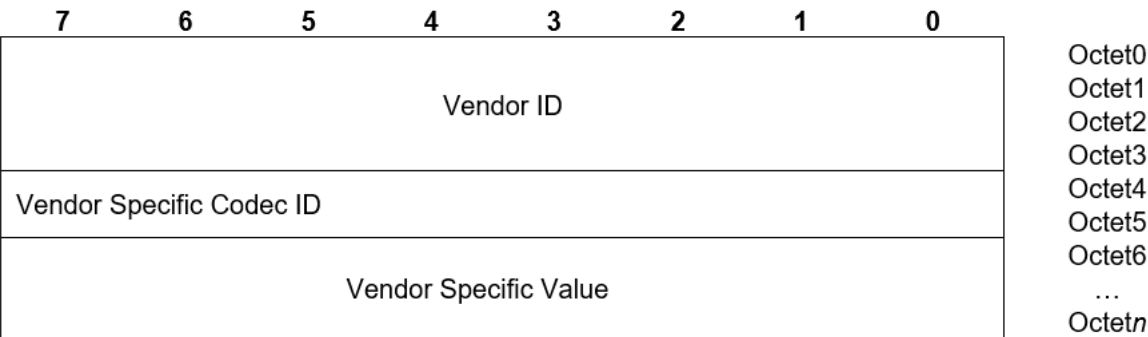


Figure 4.7: Codec Specific Information Elements for Vendor Specific A2DP codec interoperability requirements

4.7.2.1 Vendor ID

A 32-bit Vendor ID shall be used. The lower 16 bits of the 32-bit Vendor ID shall contain a valid, non-reserved 16-bit Company ID as defined in Bluetooth Assigned Numbers [5]. The upper 16 bits of the 32-bit Vendor ID shall be set to zero. The LSB of the Vendor ID shall be placed in octet 0.

4.7.2.2 Vendor Specific Codec ID

The Vendor Specific Codec ID field in Figure 4.7 contains 16-bit codec ID administered by the Vendor.

4.7.2.3 Vendor Specific Value

The Vendor Specific Value field in Figure 4.7 contains values specifically defined by the Vendor. Details are out of scope of this profile.

4.7.3 Media packet header requirements

Media packet header requirements shall be defined by the Vendor.

4.7.4 Media payload format

The media payload format shall be defined by the Vendor.

4.8 MPEG-D USAC codec interoperability requirements

4.8.1 Reference

For MPEG-D USAC, refer to [18]. For MPEG-D DRC, refer to [19].

4.8.2 Codec Specific Information Elements

Figure 4.8 defines the Codec Specific Information Elements field for MPEG-D USAC used in the signaling procedures. For reference, see Section 8.21.5 in AVDTP [4]. If MPEG-D USAC is supported, the requirements for each field in Figure 4.8 are shown in Table 4.26 to Table 4.30. If the packet includes improper settings, an error code shall be returned as specified in Section 5.1.3.

7	6	5	4	3	2	1	0	
Object Type		Sampling Frequency						Octet0
Sampling Frequency								Octet1
Sampling Frequency								Octet2
Sampling Frequency				Channels				Octet3
VBR		Bit rate						Octet4
Bit rate								Octet5
Bit rate								Octet6

Figure 4.8: Codec Specific Information Elements for MPEG-D USAC

In the AVDTP_GET_ALL_CAPABILITIES_RSP message of AVDTP, one or more values may be defined/set in each field. In the AVDTP_SET_CONFIGURATION_CMD message and the AVDTP_RECONFIGURE_CMD message of AVDTP, only one value shall be defined/set in each field.

4.8.2.1 Object Type

Table 4.26 shows the value of the Object Type field for MPEG-D USAC.

Position	Object Type	Support in SRC	Support in SNK
Octet0; b7	MPEG-D USAC with MPEG-D DRC	M	M
Octet0; b6	RFU	–	–

Table 4.26: Object Type for MPEG-D USAC

4.8.2.2 Sampling Frequency

Table 4.27 shows the value of the Sampling Frequency field for MPEG-D USAC. The decoder in the SNK shall support the sampling frequencies of 44.1 kHz and 48 kHz. The encoder in the SRC shall support at least one of the sampling frequencies of 44.1 kHz and 48 kHz. Other sampling frequencies are optional for both the SNK and the SRC.

Position	Sampling Frequency (Hz)	Support in SRC	Support in SNK
Octet0; b5	7350	O	O
Octet0; b4	8000	O	O
Octet0; b3	8820	O	O
Octet0; b2	9600	O	O
Octet0; b1	11025	O	O
Octet0; b0	11760	O	O
Octet1; b7	12000	O	O
Octet1; b6	12800	O	O
Octet1; b5	14700	O	O
Octet1; b4	16000	O	O
Octet1; b3	17640	O	O
Octet1; b2	19200	O	O
Octet1; b1	22050	O	O
Octet1; b0	24000	O	O
Octet2; b7	29400	O	O
Octet2; b6	32000	O	O

Position	Sampling Frequency (Hz)	Support in SRC	Support in SNK
Octet2; b5	35280	O	O
Octet2; b4	38400	O	O
Octet2; b3	44100	C1	M
Octet2; b2	48000	C1	M
Octet2; b1	58800	O	O
Octet2; b0	64000	O	O
Octet3; b7	70560	O	O
Octet3; b6	76800	O	O
Octet3; b5	88200	O	O
Octet3; b4	96000	O	O
C1: At least one of the values shall be supported			

Table 4.27: Sampling Frequency field for MPEG-D USAC

4.8.2.3 Channels

Table 4.28 shows the value of the Channels field for MPEG-D USAC. The SNK shall support all configurations with up to two channels. The SRC shall support at least one configuration with one or two channels.

Position	Channels	Support in SRC	Support in SNK
Octet3; b3	1	C1	M
Octet3; b2	2	C1	M
Octet3; b1	RFU	–	–
Octet3; b0	RFU	–	–
C1: At least one of the values shall be supported			

Table 4.28: Channels field for MPEG-D USAC

4.8.2.4 VBR

The decoder in the SNK shall support VBR. The encoder in the SRC may support VBR.

Position	VBR Support	Support in SRC	Support in SNK
Octet4; b7	VBR supported	O	M

Table 4.29: VBR support for MPEG-D USAC



4.8.2.5 Bit rate

The Bit rate field is assigned the bit rate in bits per second for a constant rate stream, or the maximum peak bit rate (measured per frame) for a VBR stream. A value of 0 indicates that the bit rate is not known. The field is expressed as a 23-bit UIMsf as described in [Table 4.30](#).

Octet 4 (bits 6... 0)							Octet 5							Octet 6								
b22	b21	b20	b19	b18	b17	b16	b15	b14	b13	b12	b11	b10	b9	b8	b7	b6	b5	b4	b3	b2	b1	b0

Table 4.30: Bit order for the Bit rate field of MPEG-D USAC

4.8.3 Media packet header requirements

The media packet header requirements for MPEG-D USAC are contained in the specification of media payload format referenced in [Section 4.8.4](#).

4.8.4 Media payload format

MPEG-D USAC uses the media payload format defined in [\[13\]](#). Also, [\[13\]](#) defines the payload format for MPEG-4 audio, which is also used for MPEG-D USAC. For details, see [\[12\]](#). The value of the muxConfigPresent parameter shall be set to 1.

5 GAVDP interoperability requirements

This profile requires compliance to the Generic A/V Distribution Profile (GAVDP) [3]. The following text together with the associated sub-clauses defines the requirements with regards to this profile, in addition to the requirements defined in GAVDP.

Requirements described in GAVDP are described for INT/ACP. For the SRC, it is mandatory to support both INT and ACP. For the SNK, it is mandatory to support ACP and it is optional to support INT. See Table 5.2.

GAVDP Role	Support in SRC	Support in SNK
INT	M	O
ACP	M	M

Table 5.1: GAVDP Roles

5.1 AVDTP interoperability requirements

5.1.1 Signaling procedures

There are different requirements for the streaming and for the delay reporting procedure. While streaming might be initiated from the SRC or the SNK, the delay report is always sent from the SNK to the SRC.

5.1.1.1 Streaming roles

In the Advanced Audio Distribution Profile, it is mandatory for the SRC and optional for the SNK to be able to establish a streaming connection, start streaming, and release the streaming connection. The SRC can assume the role of both INT and ACP, while the SNK device can assume the role of ACP and optionally, the role of INT. Therefore, it is mandatory for the SRC to support the ACP role, so that signaling procedures can be manipulated between any combination of a SRC device and a SNK device.

	Role in GAVDP	Support in SRC	Support in SNK
1	INT	M	O
2	ACP	M	M

Table 5.2: Roles in GAVDP

5.1.1.2 Delay Reporting roles

Delay reports are sent from the SNK to the SRC; therefore, the SNK is always the INT and the SRC is always the ACP. Delay Reporting is mandatory for SNK devices; therefore, the INT role is mandatory for SNK devices while the ACP role in SRC devices is optional.

	Role in GAVDP	Support in SRC	Support in SNK
1	INT	X	M
2	ACP	O	X

Table 5.3: Roles in GAVDP for Delay Reporting



5.1.2 Transport services

Table 5.4 shows support of AVDTP transport capabilities for this profile. In this profile, Basic service is mandatory to support.

Item no.	Capability	Ref.	Support
1	Basic service	7.2 in [4]	M
2	Reporting service	7.3 in [4]	O
3	Recovery service	7.4 in [4]	O
4	Multiplexing service	7.5 in [4]	O
5	Robust header compression service	7.6 in [4]	O

Table 5.4: AVDTP transport capabilities

5.1.3 Error codes

If the Codec Specific Information Elements include improper settings and are not rejected with the error codes specified by GAVDP [3] or AVDTP [4], then an applicable error code from the list in Table 5.5 shall be returned.

Error ID	Related Signaling Command	Related CODEC	Error Abbreviation	Error Description
0xC1	AVDTP_SET_- CONFIGURATION_- CMD AVDTP_- RECONFIGURE_- CMD	ALL	INVALID_CODEC_TYPE	Media Codec Type is not valid
0xC2	AVDTP_SET_- CONFIGURATION_- CMD AVDTP_- RECONFIGURE_- CMD	ALL	NOT_SUPPORTED_- CODEC_TYPE	Media Codec Type is not supported
0xC3	AVDTP_SET_- CONFIGURATION_- CMD AVDTP_- RECONFIGURE_- CMD	ALL	INVALID_- SAMPLING_FREQUENCY	Sampling Frequency is not valid or multiple values have been selected

Error ID	Related Signaling Command	Related CODEC	Error Abbreviation	Error Description
0xC4	AVDTP_SET_- CONFIGURATION_- CMD AVDTP_- RECONFIGURE_- CMD	ALL	NOT_SUPPORTED_- SAMPLING_FREQUENCY	Sampling Frequency is not supported
0xC5	AVDTP_SET_- CONFIGURATION_- CMD AVDTP_- RECONFIGURE_- CMD	SBC MPEG-1,2 Audio ATRAC family	INVALID_CHANNEL_MODE	Channel Mode is not valid or multiple values have been selected
0xC6	AVDTP_SET_- CONFIGURATION_- CMD AVDTP_- RECONFIGURE_- CMD	SBC MPEG-1,2 Audio ATRAC family	NOT_SUPPORTED_- CHANNEL_MODE	Channel Mode is not supported
0xC7	AVDTP_SET_- CONFIGURATION_- CMD AVDTP_- RECONFIGURE_- CMD	SBC	INVALID_SUBBANDS	None or multiple values have been selected for Number of Subbands
0xC8	AVDTP_SET_- CONFIGURATION_- CMD AVDTP_- RECONFIGURE_- CMD	SBC	NOT_SUPPORTED_- SUBBANDS	Number of Subbands is not supported
0xC9	AVDTP_SET_- CONFIGURATION_- CMD AVDTP_- RECONFIGURE_- CMD	SBC	INVALID_- ALLOCATION_METHOD	None or multiple values have been selected for Allocation Method
0xCA	AVDTP_SET_- CONFIGURATION_- CMD AVDTP_- RECONFIGURE_- CMD	SBC	NOT_SUPPORTED_- ALLOCATION_METHOD	Allocation Method is not supported

Error ID	Related Signaling Command	Related CODEC	Error Abbreviation	Error Description
0xCB	AVDTP_SET_- CONFIGURATION_- CMD RECONFIGURE	SBC	INVALID_MINIMUM_- BITPOOL_VALUE	Minimum Bitpool Value is not valid
0xCC	AVDTP_SET_- CONFIGURATION_- CMD AVDTP_- RECONFIGURE_- CMD	SBC	NOT_SUPPORTED_- MINIMUM_BITPOOL_- VALUE	Minimum Bitpool Value is not supported
0xCD	AVDTP_SET_- CONFIGURATION_- CMD AVDTP_- RECONFIGURE_- CMD	SBC	INVALID_MAXIMUM_- BITPOOL_VALUE	Maximum Bitpool Value is not valid
0xCE	AVDTP_SET_- CONFIGURATION_- CMD AVDTP_- RECONFIGURE_- CMD	SBC	NOT_SUPPORTED_- MAXIMUM_BITPOOL_- VALUE	Maximum Bitpool Value is not supported
0xCF	AVDTP_SET_- CONFIGURATION_- CMD AVDTP_- RECONFIGURE_- CMD	MPEG-1,2 Audio	INVALID_LAYER	None or multiple values have been selected for Layer
0xD0	AVDTP_SET_- CONFIGURATION_- CMD AVDTP_- RECONFIGURE_- CMD	MPEG-1,2 Audio	NOT_SUPPORTED_LAYER	Layer is not supported
0xD1	AVDTP_SET_- CONFIGURATION_- CMD AVDTP_- RECONFIGURE_- CMD	MPEG-1,2 Audio	NOT_SUPPORTED_CRC	CRC is not supported

Error ID	Related Signaling Command	Related CODEC	Error Abbreviation	Error Description
0xD2	AVDTP_SET_- CONFIGURATION_- CMD AVDTP_- RECONFIGURE_- CMD	MPEG-1,2 Audio	NOT_SUPPORTED_MPF	MPF-2 is not supported
0xD3	AVDTP_SET_- CONFIGURATION_- CMD AVDTP_- RECONFIGURE_- CMD	MPEG-1,2 Audio MPEG-2,4 AAC MPEG-D USAC ATRAC family	NOT_SUPPORTED_VBR	VBR is not supported
0xD4	AVDTP_SET_- CONFIGURATION_- CMD AVDTP_- RECONFIGURE_- CMD	MPEG-1,2 Audio ATRAC family	INVALID_BIT_RATE	None or multiple values have been selected for Bit Rate
0xD5	AVDTP_SET_- CONFIGURATION_- CMD AVDTP_- RECONFIGURE_- CMD	MPEG-1,2 Audio MPEG-2,4 AAC MPEG-D USAC ATRAC family	NOT_SUPPORTED_BIT_RATE	Bit Rate is not supported
0xD6	AVDTP_SET_- CONFIGURATION_- CMD AVDTP_- RECONFIGURE_- CMD	MPEG-2,4 AAC MPEG-D USAC	INVALID_OBJECT_TYPE	Either 1) Object type is not valid or 2) None or multiple values have been selected for Object Type
0xD7	AVDTP_SET_- CONFIGURATION_- CMD AVDTP_- RECONFIGURE_- CMD	MPEG-2,4 AAC	NOT_SUPPORTED_OBJECT_TYPE	Object Type is not supported
0xD8	AVDTP_SET_- CONFIGURATION_- CMD AVDTP_- RECONFIGURE_- CMD	MPEG-2,4 AAC MPEG-D USAC	INVALID_CHANNELS	Either 1) Channels is not valid or 2) None or multiple values have been selected for Channels

Error ID	Related Signaling Command	Related CODEC	Error Abbreviation	Error Description
0xD9	AVDTP_SET_- CONFIGURATION_- CMD AVDTP_- RECONFIGURE_- CMD	MPEG-2,4 AAC MPEG-D USAC	NOT_SUPPORTED_- CHANNELS	Channels is not supported
0xDA	AVDTP_SET_- CONFIGURATION_- CMD AVDTP_- RECONFIGURE_- CMD	ATRAC family	INVALID_VERSION	Version is not valid
0xDB	AVDTP_SET_- CONFIGURATION_- CMD AVDTP_- RECONFIGURE_- CMD	ATRAC family	NOT_SUPPORTED_- VERSION	Version is not supported
0xDC	AVDTP_SET_- CONFIGURATION_- CMD AVDTP_- RECONFIGURE_- CMD	ATRAC family	NOT_SUPPORTED_- MAXIMUM_SUL	Maximum SUL is not acceptable for the Decoder in the SNK.
0xDD	AVDTP_SET_- CONFIGURATION_- CMD AVDTP_- RECONFIGURE_- CMD	SBC	INVALID_BLOCK_LENGTH	None or multiple values have been selected for Block Length
0xDE- 0xDF	–	–	–	RFU
0xE0	AVDTP_SET_- CONFIGURATION_- CMD AVDTP_- RECONFIGURE_- CMD	ALL	INVALID_CP_TYPE	The requested CP Type is not supported.

Error ID	Related Signaling Command	Related CODEC	Error Abbreviation	Error Description
0xE1	AVDTP_SET_- CONFIGURATION_- CMD AVDTP_- RECONFIGURE_- CMD AVDTP_SECURITY_- CONTROL_CMD	ALL	INVALID_CP_FORMAT	The format of Content Protection Service Capability/Content Protection Scheme Dependent Data is not correct.
0xE2	AVDTP_SET_- CONFIGURATION_- CMD AVDTP_- RECONFIGURE_- CMD	ALL	INVALID_- CODEC_PARAMETER	The codec parameter is invalid. Used if a more specific error code does not exist for the codec in use.
0xE3	AVDTP_SET_- CONFIGURATION_- CMD AVDTP_- RECONFIGURE_- CMD	ALL	NOT_SUPPORTED_- CODEC_PARAMETER	The codec parameter is not supported. Used if a more specific error code does not exist for the codec in use.
0xE4	AVDTP_SET_- CONFIGURATION_- CMD AVDTP_- RECONFIGURE_- CMD	MPEG-2,4 AAC	INVALID_DRC	Combination of Object Type and DRC is invalid
0xE5	AVDTP_SET_- CONFIGURATION_- CMD AVDTP_- RECONFIGURE_- CMD	MPEG-2,4 AAC	NOT_SUPPORTED_DRC	DRC is not supported
0xE6 to 0xFF	–	–	–	RFU

Table 5.5: Error codes

5.2 L2CAP interoperability requirements

For the L2CAP layer, no additions to the requirements as stated in the GAVDP shall apply except for the following requirements.



5.2.1 Maximum Transmission Unit

The minimum Maximum Transmission Unit (MTU) that a L2CAP implementation for this profile shall support is 335 bytes.²

5.3 SDP interoperability requirements

This profile defines the following service records for the SRC and the SNK respectively. The codes assigned to the mnemonics used in the Value column as well as the codes assigned to the attribute identifiers (if not specifically mentioned in the AttrID column) can be found in Bluetooth Assigned Numbers [5].

Item	Definition	Type	Value	AttrID	Status	Default
Service Class ID List	–	–	–	–	M	–
Service Class #0	–	UUID	Audio Source	–	M	–
Protocol Descriptor List	–	–	–	–	M	–
Protocol #0	–	UUID	L2CAP	–	M	–
Parameter #0 for Protocol #0	PSM	Uint 16	PSM= AVDTP	–	M	–
Protocol #1	–	UUID	AVDTP	–	M	–
Parameter #0 for Protocol #1	Version	Uint 16	0x0103*	–	M	–
Bluetooth Profile Descriptor List	–	–	–	–	M	–
Profile #0	–	UUID	Advanced Audio Distribution	–	M	–
Parameter #0 for Profile #0	Version	Uint 16	0x0104* ¹	–	M	–
Supported Features	A2DP features flags	Uint 16	Bit 0 = Player Bit 1 = Microphone Bit 2 = Tuner Bit 3 = Mixer Bits 4 to 15 = RFU The bits for supported features are set to 1. Others are set to 0.	–	O	–

²DH5 packet size equals 339 bytes including 4-byte L2CAP header.

Item	Definition	Type	Value	AttrID	Status	Default
Provider Name	Displayable Text Name	String	Provider Name	–	O	–
Service Name	Displayable Text Name	String	Service-provider defined	–	O	–

Table 5.6: Service record for source

* Indicating AVDTP Version 1.3

*1 Indicating A2DP Version 1.4

Item	Definition	Type	Value	AttrID	Status	Default
Service Class ID List	–	–	–	–	M	–
Service Class #0	–	UUID	Audio Sink	–	M	–
Protocol Descriptor List	–	–	–	–	M	–
Protocol #0	–	UUID	L2CAP	–	M	–
Parameter #0 for Protocol #0	PSM	Uint 16	PSM= AVDTP	–	M	–
Protocol #1	–	UUID	AVDTP	–	M	–
Parameter #0 for Protocol #1	Version	Uint 16	0x0103*	–	M	–
Bluetooth Profile Descriptor List	–	–	–	–	M	–
Profile #0	–	UUID	Advanced Audio Distribution	–	M	–
Parameter #0 for Profile #0	Version	Uint 16	0x0104* ¹	–	M	–
Supported Features	A2DP features flags	Uint 16	Bit 0 = Headphone Bit 1 = Speaker Bit 2 = Recorder Bit 3 = Amplifier Bits 4 to 15 = RFU The bits for supported features are set to 1. Others are set to 0.	–	O	–

Item	Definition	Type	Value	AttrID	Status	Default
Provider Name	Displayable Text Name	String	Provider Name	–	O	–
Service Name	Displayable Text Name	String	Service-provider defined	–	O	–

Table 5.7: Service record for sink

* Indicating AVDTP Version 1.3

*1 Indicating A2DP Version 1.4

5.4 Link Manager interoperability requirements

For the LMP layer, no additions to the requirements as stated in the GAVDP shall apply.

5.5 Link Controller interoperability requirements

For the Link Controller layer, the requirements as stated in the GAVDP shall apply. The following packets shall also be supported in both the SNK and the SRC: DH3, DM3, DH5, and DM5.

Requirements described in GAVDP are described for INT/ACP. For the SRC, it is mandatory to support both INT and ACP. For the SNK, it is mandatory to support ACP and it is optional to support INT.

Table 5.8 shows the support status for link controller procedures within this profile.

	Procedure	Support in SRC	Support in SNK
1.	Inquiry	M	O
2.	Inquiry scan	M	M

Table 5.8: LC capabilities

5.5.1 Class of Device

The Class of Device field shall be set to the following:

- Mandatory to set the 'Rendering' bit for the SNK and the 'Capturing' bit for the SRC in the Service Class field.
- Recommended to set 'Audio/Video' as Major Device class both for the SNK and the SRC.
- Select the appropriate Minor Device class as defined in the Bluetooth Assigned Numbers [5].

6 Generic Access Profile interoperability requirements

The Advanced Audio Distribution Profile requires compliance to the Generic Access Profile. This section defines the support requirements for the capabilities as defined in the Generic Access Profile.

6.1 Modes

Table 6.1 shows the support status for Modes within this profile.

	Procedure	Support in SRC	Support in SNK
1.	Discoverability modes	–	–
	Non-Discoverable mode	C1	C1
	Limited discoverable mode	C2	C2
	General discoverable mode	C2	C2
2.	Connectability modes	–	–
	Non-Connectable mode	X	X
	Connectable mode	M	M
3.	Bonding modes	–	–
	Non-bondable mode	O	O
	Bondable mode	M	M

Table 6.1: Modes

C1. If limited discoverable mode is supported, non-discoverable mode is mandatory, otherwise optional.

C2. Either limited discoverable mode or general discoverable mode shall be supported.

6.2 Security aspects

There is no change to the requirements as stated in the Generic Access Profile.

6.3 Idle mode procedures

Table 6.2 shows the support status for Idle mode procedures within this profile.

	Procedure	Support in SRC	Support in SNK
1.	Initiation of general inquiry	M	O
2.	Initiation of limited inquiry	O	O
3.	Initiation of name discovery	O	O

	Procedure	Support in SRC	Support in SNK
4.	Initiation of device discovery	O	O
5.	Initiation of bonding	O	O

Table 6.2: Supported Idle mode procedures

7 Acronyms and abbreviations

Acronym	Description
AAC	Advanced Audio Coding
A/V	Audio/Video
A2DP	Advanced Audio Distribution Profile
ACP	Acceptor
AVDTP	Audio/Video Distribution Transport Protocol
AVRCP	Audio/Video Remote Control Profile
CP_Type	Content Protection Type
CRC	Cyclic Redundancy Check
DRC	Dynamic Range Control
ELD	Enhanced Low Delay
GAP	Generic Access Profile
GAVDP	Generic Audio/Video Distribution Profile
HE-AAC	High-Efficiency Advanced Audio Coding
ICS	Implementation Conformance Statement
IETF	Internet Engineering Task Force
INT	Initiator
LM	Link Manager
LMP	Link Manager Protocol
L2CAP	Logical Link Control and Adaptation Protocol
LSB	Least Significant Bit (Byte)
LTP	Long Term Prediction
MPEG	Moving Picture Expert Group
MSB	Most Significant Bit (Byte)
MTU	Maximum Transmission Unit
PSM	Protocol/Service Multiplexer
QoS	Quality of Service
RTP	Real-time Transport Protocol
SBC	Low Complexity Subband Coding

Acronym	Description
SDP	Service Discovery Protocol
SEID	Stream Endpoint Identifier
SEP	Stream Endpoint
SNK	sink
SUL	Sound Unit Length
SRC	source
USAC	Unified Speech and Audio Coding
UiMsbf	Unsigned integer, Most significant bit first
VBR	variable bit rate
VDP	Video Distribution Profile

Table 7.1: Acronyms and abbreviations

8 References

- [1] Bluetooth Core Specification, Version 4.2 or later
- [2] Audio/Video Remote Control Profile, Version 1.5, 1.5.1, or 1.6.2 or later
- [3] Generic Audio/Video Distribution Profile, Version 1.3 or later
- [4] Audio/Video Distribution Transport Protocol, Version 1.3 or later
- [5] Bluetooth Assigned Numbers, <https://www.bluetooth.org/assigned-numbers.htm>
- [6] de Bont, F., Groenewegen, M., and Oomen, W. "A High Quality Audio Coding System at 128 kb/s", 98th AES Convention, February 1995, <https://www.aes.org/e-lib/browse.cfm?elib=7829>
- [7] ISO/IEC 11172-3:1993: Information technology – Coding of moving pictures and associated audio for digital storage media at up to about 1.5 Mbit/s – Part 3: Audio, August 1993, <https://www.iso.org/standard/22412.html>
- [8] ISO/IEC 13818-3:1998: Information technology – Generic coding of moving pictures and associated audio information – Part 3: Audio, April 1998, <https://www.iso.org/standard/26797.html>
- [9] IETF RFC 2250: "RTP Payload Format for MPEG1/MPEG2 Video", January 1998, <https://datatracker.ietf.org/doc/html/rfc2250>
- [10] IETF RFC 5219: "A More Loss-Tolerant RTP Payload Format for MP3 Audio", February 2008, <https://datatracker.ietf.org/doc/html/rfc5219>
- [11] ISO/IEC 13818-7:2006, "Information technology — Generic coding of moving pictures and associated audio information – Part 7: Advanced Audio Coding (AAC)", January 2006, <https://www.iso.org/standard/43345.html>
- [12] ISO/IEC 14496-3: 2019: Information technology – Coding of audio-visual objects – Part 3: Audio, Fifth Edition, December 2019, <https://www.iso.org/standard/76383.html>
- [13] IETF RFC 6416: "RTP Payload Format for MPEG-4 Audio/Visual Streams", October 2011, <https://datatracker.ietf.org/doc/html/rfc6416>
- [14] Conformance Test Suite of SBC
- [15] ITU-R BS.1116-3, "Methods for the subjective assessment of small impairments in audio systems including multichannel sound systems", February 2015, <https://www.itu.int/rec/R-REC-BS.1116/en>
- [16] ITU-R BS.1387-2, "Method for objective measurements of perceived audio quality", May 2023, <https://www.itu.int/rec/R-REC-BS.1387>
- [17] IETF RFC 3551: "RTP Profile for Audio and Video Conferences with Minimal Control", July 2003, <https://datatracker.ietf.org/doc/html/rfc3551>
- [18] ISO/IEC 23003-3:2020, "Information technology – MPEG audio technologies – Part 3: Unified speech and audio coding", June 2020, <https://www.iso.org/standard/76385.html>
- [19] ISO/IEC 23003-4:2025, "Information technology – MPEG audio technologies – Part 4: Dynamic range control", March 2025, <https://www.iso.org/standard/89036.html>

Appendix A. Audio Streaming with content protection

This profile does not specify a particular content protection method, rather it only provides support for various content protection methods. Specifically, AVDTP provides for the identification and negotiation of a particular content protection method via the Get All Capabilities and Stream Configuration procedures.

The Security Control procedure in AVDTP provides for the exchange of the activated content protection method.

Appendix B. Technical Specification of SBC

B.1 Introduction

This appendix describes the technical specification of Low Complexity Subband Coding (SBC). SBC is an audio coding system specially designed for Bluetooth AV applications to obtain high-quality audio at medium bit rates, while having a low computational complexity. SBC uses 4 or 8 subbands, an adaptive bit allocation algorithm, and simple adaptive block PCM quantizers. The SBC audio coding system is based on an earlier system [6]. Reference executables of both the encoder and the decoder of SBC codec are available in [14] for the Win32 platform. For further information, refer to Section 9.4.3 in [1]. Note that in the SBC source code, neither the encoder nor the decoder is available as part of the specification.

B.2 Glossary

Term	Description
frame	Basic unit that can be decoded independently
bit_count	A bit counter that keeps track of the number of bits
bitneed	A counter that represents the remaining bits during the bit allocation process

Table 8.1: Glossary

B.3 Symbols and abbreviations

B.3.1 Arithmetic operators

Operator	Description
+	Addition
-	Subtraction (as a binary operator) or negation (as a unary operator)
++	Increment
--	Decrement
*	Multiplication
^	Power
/	Division
div	Integer division
mod	Modulo operation
$\lfloor x \rfloor$	Round x towards minus infinity
$\lceil x \rceil$	Round x towards plus infinity

Operator	Description
$\sin(x)$	Sine of x
$\cos(x)$	Cosine of x
$\exp(x)$	Exponential e^x
$\text{pow}(x,y)$	Exponential x^y
\sqrt{x}	Square root of x

Table 8.2: Arithmetic operators

B.3.2 Logical operators

Operator	Description
	Logical OR
&&	Logical AND
!	Logical NOT

Table 8.3: Logical operators

B.3.3 Relation operators

Operator	Description
>	Greater than
>=	Greater than or equal to
<	Less than
<=	Less than or equal to
==	Equal to
!=	Not equal to
max()	The maximum in the argument list
min()	The minimum in the argument list
$x?y:z$	If x is true then y else z

Table 8.4: Relation operators

B.3.4 Bitwise operators

Operator	Description
&	AND
	OR

Operator	Description
>>	Shift right with sign extension
<<	Shift left with zero fill

Table 8.5: Bitwise operators

B.3.5 Assignment

Operator	Description
=	Assignment operator

Table 8.6: Assignment

B.3.6 Mnemonics

The following mnemonics are defined to describe the different data types used in the coded bit-stream.

Mnemonic	Description
Char8	Character of 8 bits
UIMsbf	Unsigned integer, Most significant bit first
SiMsbf	Signed integer, Most significant bit first
BsMsbf	Bit-stream, Most significant bit first
PCM	Pulse Code Modulation
na	Not available

Table 8.7: Mnemonics

B.3.7 Constants

Constant	Description
π	3.14159265358...

Table 8.8: Constants

B.3.8 Ranges

Range	Description
[0, 10]	A number in the range of 0 up to and including 10
[0, 10>	A number in the range of 0 up to but excluding 10

Table 8.9: Ranges

B.3.9 Number notation

Number Notation	Description
%X	Binary number representation (e.g., %01111100)
\$X	Hexadecimal number representation (e.g., \$7C)
X	Numbers with no prefix use decimal representation (e.g., 124.43 or 1.2443E+02)

Table 8.10: Number notation

B.4 Syntax

Syntax	No. of bits	Mnemonic
<pre>audio_frame() { frame_header() scale_factors() audio_samples() padding() }</pre>		

Table 8.11: Syntax of audio_frame

Syntax	No. of bits	Mnemonic
<pre>frame_header() { syncword sampling_frequency blocks channel_mode allocation_method subbands bitpool crc_check If (channel_mode==JOINT_STEREO) { for (sb=0;sb<nrof_subbands-1;sb++) { join[sb] } RFU } }</pre>	<p>8</p> <p>2</p> <p>2</p> <p>2</p> <p>1</p> <p>1</p> <p>8</p> <p>8</p> <p></p> <p>1</p> <p></p> <p>1</p>	<p>BsMsbf</p> <p>UiMsbf</p> <p>UiMsbf</p> <p>UiMsbf</p> <p>UiMsbf</p> <p>UiMsbf</p> <p>UiMsbf</p> <p>UiMsbf</p> <p></p> <p>UiMsbf</p> <p>UiMsbf</p>

Table 8.12: Syntax of frame_header

Syntax	No. of bits	Mnemonic
<pre> scale_factors() { for (ch=0;ch<nrof_channels;ch++) { for (sb=0;sb<nrof_subbands;sb++) { scale_factor[ch][sb] } } } </pre>	4	UiMsbf

Table 8.13: Syntax of *scale_factors*

Syntax	No. of bits	Mnemonic
<pre> audio_samples() { for (blk=0;blk<nrof_blocks;blk++) { for (ch=0;ch<nrof_channels;ch++) { for (sb=0;sb<nrof_subbands;sb++) { if (bits[ch][sb]!=0) { audio_sample[blk][ch][sb] } } } } } </pre>	1..16	UiMsbf

Table 8.14: Syntax of *audio_samples*

Syntax	No. of bits	Mnemonic
<pre> padding() { while ((bit_count mod 8)!=0) { padding_bit bit_count++ } } </pre>	1	UiMsbf

Table 8.15: Syntax of *padding*

B.5 Semantics

B.5.1 Frame_header

syncword -- The 8-bit string %10011100 or \$9C.

sampling_frequency -- Two bits to indicate the sampling frequency with which the stream has been encoded. The sampling frequency f_s is selected conforming to [Table 8.16](#).

sampling_frequency	fs (kHz)
00	16
01	32
10	44.1
11	48

Table 8.16: sampling_frequency

blocks -- Two bits to indicate the block size with which the stream has been encoded. The block size nrof_blocks is selected conforming to [Table 8.17](#).

blocks	nrof_blocks
00	4
01	8
10	12
11	16

Table 8.17: blocks

channel_mode -- Two bits to indicate the channel mode that has been encoded. The variable nrof_channels is derived from this information.

channel_mode	channel mode	nrof_channels
00	MONO	1
01	DUAL_CHANNEL	2
10	STEREO	2
11	JOINT_STEREO	2

Table 8.18: channel_mode

allocation_method -- One bit to indicate the bit allocation method.

Allocation_method	bit allocation method
0	LOUDNESS
1	SNR

Table 8.19: allocation_method

subbands -- One bit to indicate the number of subbands with which the stream has been encoded. The variable nrof_subbands is derived from this information.

Subbands	nrof_subbands
0	4
1	8

Table 8.20: subbands

bitpool -- This is an 8-bit integer to indicate the size of the bit allocation pool that has been used for encoding the stream. The value of the **bitpool** field shall not exceed $16 * \text{nrof_subbands}$ for the MONO and DUAL_CHANNEL channel modes and $32 * \text{nrof_subbands}$ for the STEREO and JOINT_STEREO channel modes.

crc_check -- This 8-bit parity-check word is used for error detection within the encoded stream.

join[sb] -- One bit to indicate whether joint stereo has been used in subband sb. Equals %1 if the subband has been encoded in joint stereo, and equals %0 if the subband has been encoded in stereo. Join[nrof_subbands-1] always equals %0.

B.5.2 scale_factors

scale_factor[ch][sb] -- Four bits containing the scale factor with which the samples of channel ch in subband sb shall be multiplied.

B.5.3 audio_samples

audio_samples[blk][ch][sb] -- These bits represent the audio sample of block blk in channel ch for subband sb.

B.5.4 padding

padding_bit -- Bits of value %0 that are used to pad the length of an audio_frame to an integral number of bytes.

B.6 Decoding processes

In [Figure 8.1](#) the operation of the decoder is illustrated. On the basis of the scale factors the bit allocation is calculated. For the MONO and DUAL_CHANNEL the bit allocation is calculated for each channel independently (see [Section B.6.3.1](#)). For the STEREO and JOINT_STEREO channel modes, the allocation calculation for the two channels is combined (see [Section B.6.3.2](#)). Then the number of quantization levels is derived for each subband, the subband samples are calculated and finally, via a polyphase synthesis filter, the PCM output is generated. This process is further described in this section.



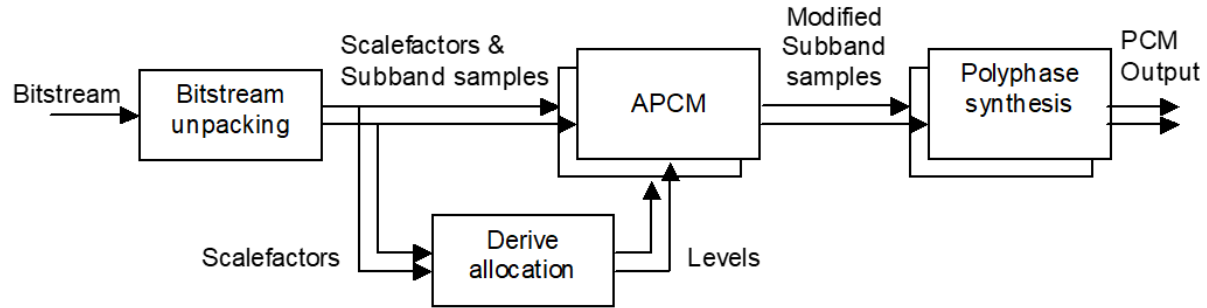


Figure 8.1: Diagram of the decoder

B.6.1 Frame header

The frame_header contains the configuration with which the bit-stream has been encoded.

B.6.1.1 CRC check

To detect transmission errors, a CRC check is performed. All the bits of the frame_header, except for the syncword and the crc_check, plus all the bits of the scale_factors are included. The error detection method used is “CRC-8” with generator polynomial.

$$G(X) = X^8 + X^4 + X^3 + X^2 + 1 \quad (\text{CRC-8}).$$

The CRC method is depicted in the CRC-check diagram given in Figure 8.2. The initial state of the shift register is \$0F. All bits included in the CRC check are input to the circuit shown in the figure. After each bit is input, the shift register is shifted by one bit. After the last shift operation, the outputs $b_{n-1} \dots b_0$ constitute a word to be compared with the CRC-check word in the stream. If the words are not identical, a transmission error has occurred in the fields on which the CRC check has been applied. To avoid annoying distortions, application of a concealment technique, such as muting of the actual frame or repetition of the previous frame is recommended.

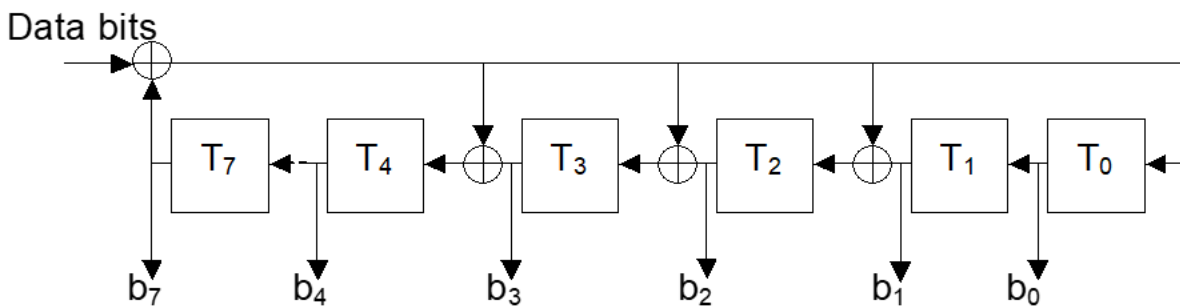


Figure 8.2: CRC-check diagram; the addition blocks represent “exclusive or” gates

B.6.2 Scale factors

The actual scaling factor for channel ch and subband sb is calculated according to

$$scalefactor[ch][sb] = pow(2.0, (scale_factor[ch][sb] + 1)).$$

B.6.3 Bit allocation

B.6.3.1 MONO and DUAL_CHANNEL bit allocation

For these two channel modes the bit allocation is calculated for each channel independently and is derived from the scale factors.

In the first step, bitneed values are derived from the scale factors according to the following pseudo code for each channel independently. The tables offset4 and offset8 are in [Section B.8](#).

```

if (allocation_method==SNR)
{
    for (sb=0;sb<nrof_subbands;sb++)
    {
        bitneed[ch][sb] = scale_factor[ch][sb];
    }
}
else
{
    for (sb=0;sb<nrof_subbands;sb++)
    {
        if (scale_factor[ch][sb] == 0)
        {
            bitneedn[ch][sb] = -5;
        }
        else
        {
            if (nrof_subbands == 4)
            {
                loudness = scale_factor[ch][sb] - offset4[sampling_frequency]
[sb];
            }
            else
            {
                loudness = scale_factor[ch][sb] - offset8[sampling_frequency]
[sb];
            }
            if (loudness > 0)
            {
                bitneed[ch][sb] = loudness div 2;
            }
            else
            {
                bitneed[ch][sb] = loudness;
            }
        }
    }
}

```

Then the maximum bitneed index is searched for.

```

max_bitneed=0;
for (sb=0;sb<nrof_subbands;sb++)
    if (bitneed[ch][sb] > max_bitneed)
        max_bitneed=bitneed[ch][sb];

```

Next, an iterative process finds out how many bitslices fit into the bitpool.

```

bitcount=0;
slicecount=0;
bitslice=max_bitneed+1; /* init just above the largest sf */
do{
    bitslice--;
    bitcount+=slicecount;
    slicecount=0;
    for (sb=0;sb<nrof_subbands;sb++)
    {
        if((bitneed[ch][sb]>bitslice+1)&&(bitneed[ch][sb]<bitslice+16))
            slicecount++;
        else if(bitneed[ch][sb]==bitslice+1)
            slicecount+=2;
    }
} while (bitcount+slicecount<bitpool);
if (bitcount+slicecount==bitpool)
{
    bitcount+=slicecount;
    bitslice--;
}

```

Thereafter, bits are distributed until the last bitslice is reached.

```

for (sb=0;sb<nrof_subbands;sb++)
    if(bitneed[ch][sb]<bitslice+2)
        bits[ch][sb]=0;
    else
        bits[ch][sb]=min(bitneed[ch][sb]- bitslice,16);

```

The remaining bits are allocated starting at subband 0.

```
sb=0;
while(bitcount < bitpool && sb < nrof_subbands)
{
    if((bits[ch][sb]>=2)&&(bits[ch][sb]<16))
    {
        bits[ch][sb]++;
        bitcount++;
    }
    else if((bitneed[ch][sb]==bitslice+1)&&(bitpool>bitcount+1))
    {
        bits[ch][sb]=2;
        bitcount+=2;
    }
    sb++;
}
sb=0;
while(bitcount < bitpool && sb < nrof_subbands)
{
    if (bits[ch][sb] < 16)
    {
        bits[ch][sb]++;
        bitcount++;
    }
    sb++;
}
```

B.6.3.2 STEREO and JOINT_STEREO bit allocation

For these two channel modes, the bit allocation calculation for the two channels is combined and is derived from the scale factors of both channels.

```

if (allocation_method==SNR)
{
    for (ch=0;ch<2;ch++)
    {
        for (sb=0;sb<nrof_subbands;sb++)
        {
            bitneed[ch][sb] = scale_factor[ch][sb];
        }
    }
}
else
{
    for (ch=0;ch<2;ch++)
    {
        for (sb=0;sb<nrof_subbands;sb++)
        {
            if (scale_factor[ch][sb] == 0)
            {
                bitneed[ch][sb] = -5;
            }
            else
            {
                if (nrof_subbands == 4)
                {
                    loudness = scale_factor[ch][sb] -
offset4[sampling_frequency][sb];
                }
                else
                {
                    loudness = scale_factor[ch][sb] -
offset8[sampling_frequency][sb];
                }
                if (loudness > 0)
                {
                    bitneed[ch][sb] = loudness div 2;
                }
                else
                {
                    bitneed[ch][sb] = loudness;
                }
            }
        }
    }
}
}

```

In the first step bitneed values are calculated from the scale factors according to the following pseudo code. The tables offset4 and offset8 are in [Section B.8](#).

Then the maximum bitneed index is searched for.

```

max_bitneed=0;
for (ch=0;ch<2;ch++)
    for (sb=0;sb<nrof_subbands;sb++)
        if (bitneed[ch][sb] > max_bitneed)

```

Next, an iterative process finds out how many bitslices fit into the bitpool.

```

bitcount=0;
slicecount=0;
bitslice=max_bitneed+1; /* init just above the largest sf */
do{
    bitslice--;
    bitcount+=slicecount;
    slicecount=0;
    for (ch=0;ch<2;ch++)
        for (sb=0;sb<nrof_subbands;sb++)
            if((bitneed[ch][sb]>bitslice+1)&&(bitneed[ch][sb]<bitslice+16))
                slicecount++;
            else if(bitneed[ch][sb]==bitslice+1)
                slicecount+=2;
} while (bitcount+slicecount<bitpool);
if (bitcount+slicecount==bitpool)
{
    bitcount+=slicecount;
    bitslice--;
}

```

Thereafter bits are distributed until the last bitslice is reached.

```

for (ch=0;ch<2;ch++)
{
    for (sb=0;sb<nrof_subbands;sb++)
    {
        if(bitneed[ch][sb]<bitslice+2)
        {
            bits[ch][sb]=0;
        }
        else
        {
            bits[ch][sb]=min(bitneed[ch][sb]-bitslice,16);
        }
    }
}

```

The remaining bits are allocated starting with subband 0 of the first channel.

```
ch=0;sb=0;
while(bitcount < bitpool && sb < nrof_subbands)
{
    if((bits[ch][sb]>=2)&&(bits[ch][sb]<16))
    {
        bits[ch][sb]++;
        bitcount++;
    }
    else if((bitneed[ch][sb]==bitslice+1)&&(bitpool>bitcount+1))
    {
        bits[ch][sb]=2;
        bitcount+=2;
    }
    if (ch == 1)
    {
        ch = 0;
        sb++;
    }
    else
    {
        ch = 1;
    }
}
ch=0;sb=0;
while(bitcount < bitpool && sb < nrof_subbands)
{
    if (bits[ch][sb] < 16)
    {
        bits[ch][sb]++;
        bitcount++;
    }
    if (ch == 1)
    {
        ch = 0;
        sb++;
    }
    else
    {
        ch = 1;
    }
}
```

B.6.4 Reconstruction of the subband samples

```

for (ch=0;ch<nrof_channels;ch++)
    for (sb=0;sb<nrof_subbands;sb++)
        levels[ch][sb] = pow(2.0,bits[ch][sb])-1;
for (blk=0;blk< nrof_blocks;blk++)
{
    for (ch=0;ch<nrof_channels;ch++)
    {
        for (sb=0;sb<nrof_subbands;sb++)
        {
            if (levels[ch][sb] > 0)
            {
                sb_sample[blk][ch][sb] = scalefactor[ch][sb] *
((audio_sample[blk][ch][sb]*2.0+1.0) /
                                levels[ch][sb]-1.0);
            }
            else
            {
                sb_sample [blk][ch][sb]=0;
            }
        }
    }
}

```

B.6.5 Joint processing

For the JOINT_STEREO channel mode, the subbands that are transmitted in joint stereo mode shall be calculated according to:

```

for (blk=0;blk< nrof_blocks;blk++)
{
    for (sb=0;sb<nrof_subbands;sb++)
    {
        if ((channel_mode==JOINT_STEREO) && (join[sb]==1))
        {
            sb_sample[blk][0][sb] = sb_sample[blk][0][sb] +
sb_sample[blk][1][sb];
            sb_sample[blk][1][sb] = sb_sample[blk][0][sb] - 2 *
sb_sample[blk][1][sb];
        }
    }
}

```

B.6.6 Synthesis filter

Synthesis of the decoded output is calculated for each channel separately. For each block of decoded subband samples the synthesis filter shall be applied to calculate nrof_subbands consecutive audio samples. The synthesis filter is a polyphase filterbank according to

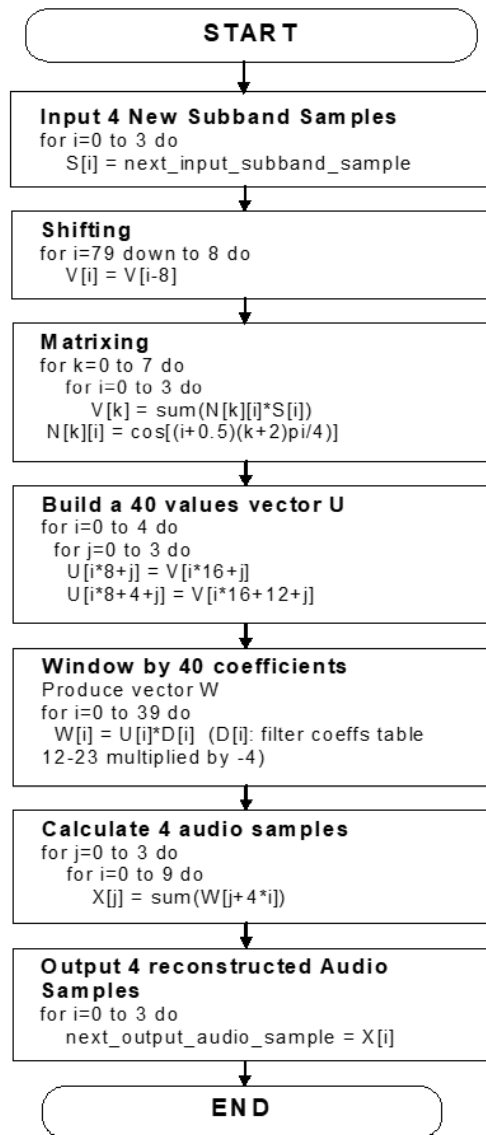
$$h_m[n] = h_p[n] \cos\left(\left(m + \frac{1}{2}\right) \cdot \left(n + \frac{M}{2}\right) \cdot \frac{\pi}{M}\right), \quad m = [0, M-1], n = [0, L-1],$$

with $M = \text{nrof_subbands}$ and $L = 10 * \text{nrof_subbands}$. The prototype filters (h_p) for both $M=4$ and $M=8$ are in [Section B.8](#). This synthesis filterbank has the same structure as the one that is used in [\[7\]](#).

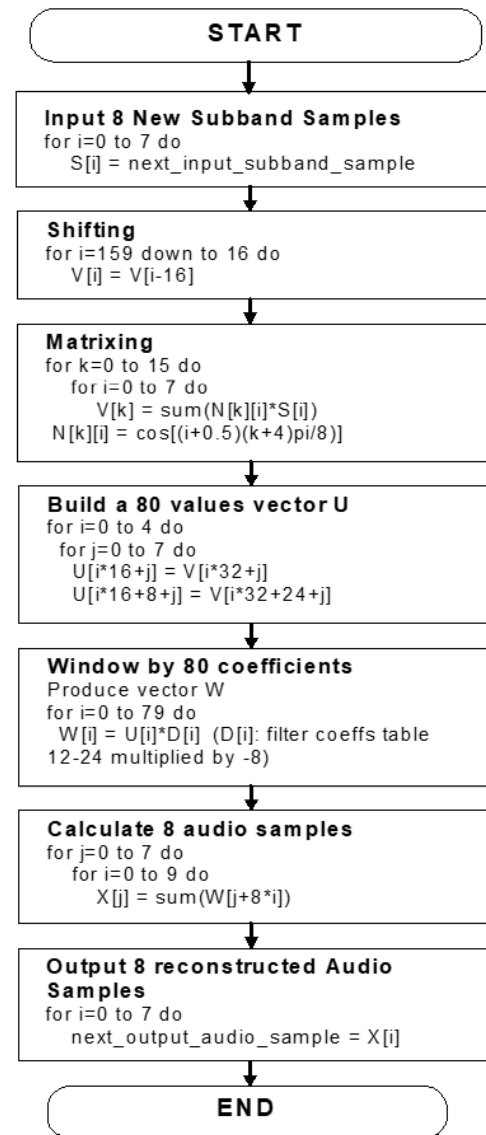
For more details refer to Section 2.4.3.2.2, "Synthesis subband filter" in [\[7\]](#). The `sb_sample[blk][ch][sb]` values, as calculated in Section B.6.4, "Reconstruction of the subband samples" and Section B.6.5, "Joint processing", are the input of the synthesis filter. The outputs of the synthesis filter are the decoded audio output samples.

A detailed filter block diagram can be found in [Figure 8.3](#).

SBC Synthesis for 4 subbands



SBC Synthesis for 8 subbands



These Flow Diagrams are adapted from Figure A.2 and paragraph 2.4.3.2.2 in ISO/IEC 11172-3

Figure 8.3: Flow diagrams of the synthesis filter



B.7 Encoding processes

In [Figure 8.4](#) the operation of the encoder is illustrated. Via a polyphase analysis filter the input PCM is split into subband signals. For each subband a scale factor is calculated. On the basis of the scale factors the bit allocation, and from there the levels are derived for each subband. Then the subband samples are scaled and quantized and finally, a bitstream is generated. This process is further described in this section.

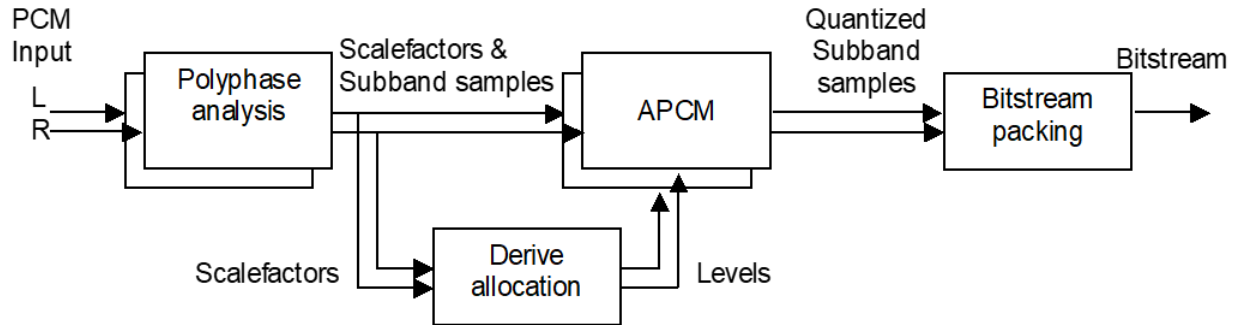


Figure 8.4: Diagram of the encoder

B.7.1 Analysis filter

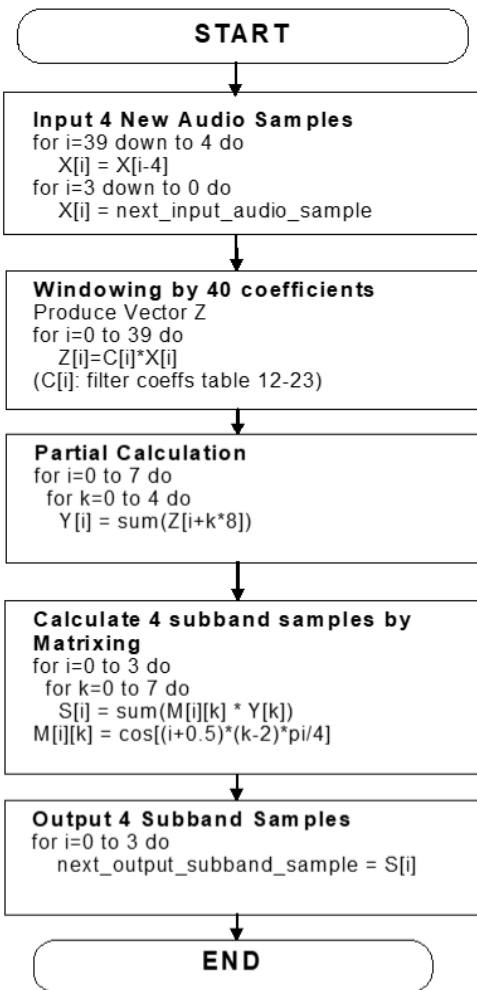
Analysis of the input PCM is calculated for each channel separately. For each block of `nrof_subbands` consecutive PCM samples the analysis filter is applied to calculate `nrof_subbands` subband samples. The analysis filter is a polyphase filterbank according to

$$h_m[n] = h_p[n] \cos\left(\left(m + \frac{1}{2}\right) \cdot \left(n - \frac{M}{2}\right) \cdot \frac{\pi}{M}\right), \quad m = [0, M-1], n = [0, L-1],$$

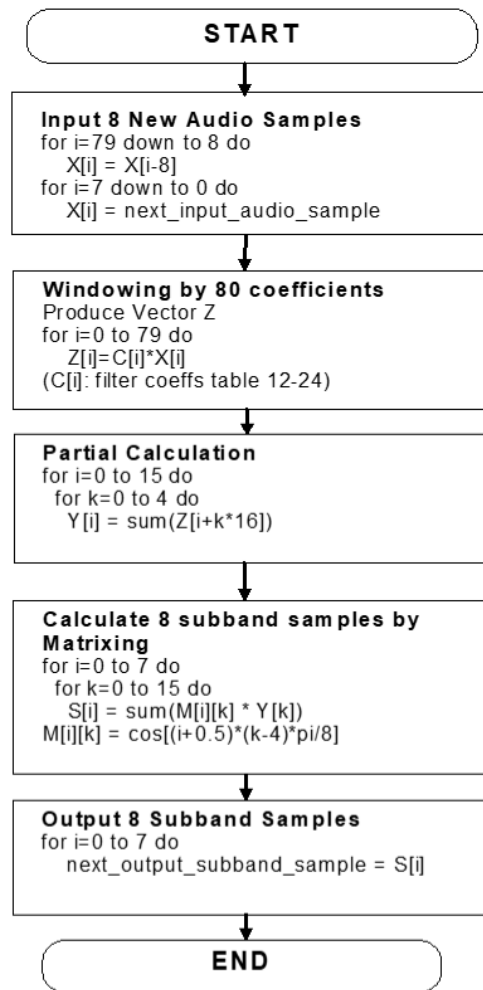
with $M = \text{nrof_subbands}$ and $L = 10 \cdot \text{nrof_subbands}$. The prototype filters for both $M=4$ and $M=8$ are in [Section B.8](#). This analysis filterbank has the same structure as the one that is used in [\[7\]](#).

A detailed filter block diagram can be found in [Figure 8.5](#).

SBC Analysis for 4 subbands



SBC Analysis for 8 subbands



These Flow Diagrams are adapted from Figure C.4 and paragraph C.1.3 in ISO/IEC 11172-3

Figure 8.5: Flow diagrams of the analysis filter

B.7.2 Scale factors

For each subband a scale factor is calculated by taking the next higher scale factor value of the maximum absolute value in each subband. The scale factor values are defined in [Section B.6.2](#).

B.7.3 JOINT_STEREO channel mode operation

For the JOINT_STEREO channel mode operation a slightly different procedure is applied. From the L and R subband signals sum and difference subband signals are derived and scale factors are calculated for these sum and difference subband signals. A simple criterion may be used to determine whether the L and R subband signals are transmitted or the sum and difference subband signals, e.g., if the sum of the scale factors of L and R is larger than the sum of the scale factors of the sum and difference signals, the subband is coded using joint coding.



B.7.4 Bit allocation

The bit allocation is exactly the same for the encoder and the decoder, and is described in [Section B.6.3](#).

B.7.5 Quantization

The subband samples are normalized and quantized using the following formula.

$$\text{quantized_b_ample}[\text{blk}][\text{ch}][\text{sb}] = \lfloor ((\text{sb_sample}[\text{blk}][\text{ch}][\text{sb}] / \text{scalefactor}[\text{ch}][\text{sb}] + 1.0) * \text{levels}[\text{ch}][\text{sb}]) / 2.0 \rfloor$$

B.8 Tables

In the case that the LOUDNESS bit allocation method is used in the bit allocation process, the next two tables are used.

offset4	fs = 16000	fs = 32000	fs = 44100	fs = 48000
sb = 0	-1	-2	-2	-2
sb = 1	0	0	0	0
sb = 2	0	0	0	0
sb = 3	0	1	1	1

Table 8.21: Offset table for four subbands

offset8	fs = 16000	fs = 32000	fs = 44100	fs = 48000
sb = 0	-2	-3	-4	-4
sb = 1	0	0	0	0
sb = 2	0	0	0	0
sb = 3	0	0	0	0
sb = 4	0	0	0	0
sb = 5	0	0	0	0
sb = 6	0	1	1	1
sb = 7	1	2	2	2

Table 8.22: Offset table for eight subbands

For the analysis and synthesis filters the filter coefficients are defined in the next two tables. The tables shall be read row-wise.

Proto_4_40			
0.00000000E+00	5.36548976E-04	1.49188357E-03	2.73370904E-03
3.83720193E-03	3.89205149E-03	1.86581691E-03	-3.06012286E-03
1.09137620E-02	2.04385087E-02	2.88757392E-02	3.21939290E-02

Proto_4_40			
2.58767811E-02	6.13245186E-03	-2.88217274E-02	-7.76463494E-02
1.35593274E-01	1.94987841E-01	2.46636662E-01	2.81828203E-01
2.94315332E-01	2.81828203E-01	2.46636662E-01	1.94987841E-01
-1.35593274E-01	-7.76463494E-02	-2.88217274E-02	6.13245186E-03
2.58767811E-02	3.21939290E-02	2.88757392E-02	2.04385087E-02
-1.09137620E-02	-3.06012286E-03	1.86581691E-03	3.89205149E-03
3.83720193E-03	2.73370904E-03	1.49188357E-03	5.36548976E-04

Table 8.23: Filter coefficients for four subbands

Proto_8_80			
0.00000000E+00	1.56575398E-04	3.43256425E-04	5.54620202E-04
8.23919506E-04	1.13992507E-03	1.47640169E-03	1.78371725E-03
2.01182542E-03	2.10371989E-03	1.99454554E-03	1.61656283E-03
9.02154502E-04	-1.78805361E-04	-1.64973098E-03	-3.49717454E-03
5.65949473E-03	8.02941163E-03	1.04584443E-02	1.27472335E-02
1.46525263E-02	1.59045603E-02	1.62208471E-02	1.53184106E-02
1.29371806E-02	8.85757540E-03	2.92408442E-03	-4.91578024E-03
-1.46404076E-02	-2.61098752E-02	-3.90751381E-02	-5.31873032E-02
6.79989431E-02	8.29847578E-02	9.75753918E-02	1.11196689E-01
1.23264548E-01	1.33264415E-01	1.40753505E-01	1.45389847E-01
1.46955068E-01	1.45389847E-01	1.40753505E-01	1.33264415E-01
1.23264548E-01	1.11196689E-01	9.75753918E-02	8.29847578E-02
-6.79989431E-02	-5.31873032E-02	-3.90751381E-02	-2.61098752E-02
-1.46404076E-02	-4.91578024E-03	2.92408442E-03	8.85757540E-03
1.29371806E-02	1.53184106E-02	1.62208471E-02	1.59045603E-02
1.46525263E-02	1.27472335E-02	1.04584443E-02	8.02941163E-03
-5.65949473E-03	-3.49717454E-03	-1.64973098E-03	-1.78805361E-04
9.02154502E-04	1.61656283E-03	1.99454554E-03	2.10371989E-03
2.01182542E-03	1.78371725E-03	1.47640169E-03	1.13992507E-03
8.23919506E-04	5.54620202E-04	3.43256425E-04	1.56575398E-04

Table 8.24: Filter coefficients for eight subbands



B.9 Calculation of bit rate and frame length

Bit rate (**bit_rate**) is calculated using the following equation:

$$\text{bit_rate} = 8 * \text{frame_length} * f_s / \text{nrof_subbands} / \text{nrof_blocks},$$

where **f_s**, **nrof_subbands** and **nrof_blocks** denote sampling frequency, number of subbands and number of blocks, respectively. Bit Rate is expressed in kb/s, because **f_s** is expressed in kHz. The Frame Length (**frame_length**) is expressed in bytes as

$$\text{frame_length} = 4 + (4 * \text{nrof_subbands} * \text{nrof_channels}) / 8 + \lceil \text{nrof_blocks} * \text{nrof_channels} * \text{bitpool} / 8 \rceil.$$

for the MONO and DUAL_CHANNEL channel modes, and

$$\text{frame_length} = 4 + (4 * \text{nrof_subbands} * \text{nrof_channels}) / 8 + \lceil (\text{join} * \text{nrof_subbands} + \text{nrof_blocks} * \text{bitpool}) / 8 \rceil.$$

for the STEREO and JOINT_STEREO channel modes.

Here, **nrof_channels** and **bitpool** denote number of channels and bitpool value, respectively. When joint stereo is used, **join** = 1, otherwise 0. For reference, see [Section B.5](#).

Appendix C. Signaling flows

This section contains an example of typical signaling procedures defined in AVDTP for audio streaming set up. For details, refer to GAVDP [3] and AVDTP [4]. In this example, the SRC is assumed to be the INT, while the SNK to be the ACP.

C.1 Audio Streaming setup

The initial states of both devices are <IDLE>.

The SRC initiates the Stream Endpoint (SEP) Discovery procedure. This procedure serves to return the media type and Stream Endpoint Identifier (SEID) for each stream endpoint. The SRC finds the audio-type stream endpoint.

Then, the Get All Capabilities procedure is initiated to collect service capabilities of the SNK. There are two kinds of service capabilities; one is an application service capability and the other is a transport service capability. The application service capability for A2DP consists of audio codec capability and content protection capability. Regarding the transport service capability, refer to Section 5.4 in AVDTP [4].

Based on collected SEP information and service capabilities, the SRC determines the most suitable audio streaming parameters (codec, content protection and transport service) for the SNK and the SRC itself. Then, the SRC requests the SNK to configure the audio parameters of the SNK by using the *Stream Configuration* procedure. The SRC also configures the audio parameters of itself.

Then, L2CAP channels are established as defined in the *Stream Establishment* procedure. Finally, the states of both devices are set at <OPEN>.

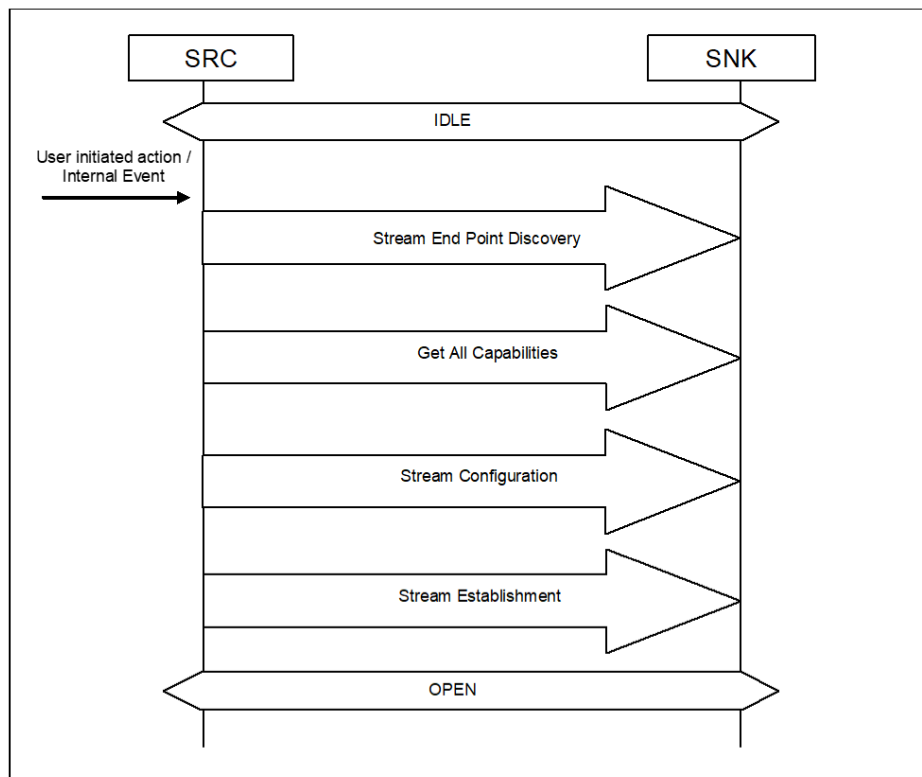


Figure 8.6: Audio Streaming setup

C.2 Audio Streaming

The SRC initiates the Start Streaming procedure by a user-initiated action or an internal event. The states of both devices are changed from <OPEN> to <STREAMING>. Audio streaming is started after this procedure is completed.

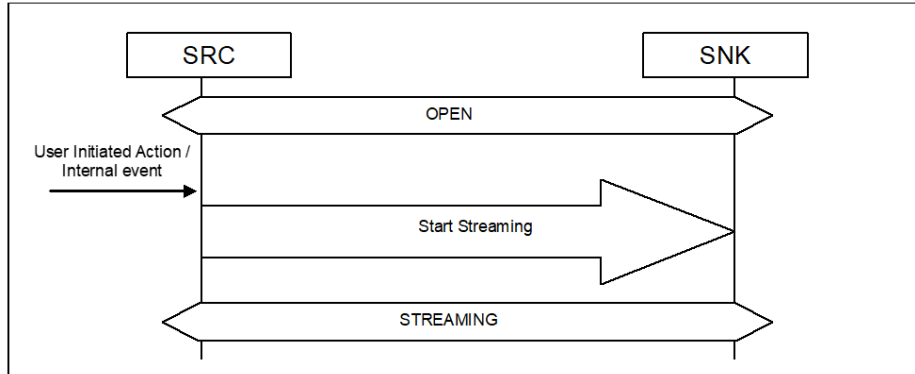


Figure 8.7: Audio Streaming